

# Beyond Net Zero Carbon

## Our commitment to carbon emissions reduction

August 2021



A photograph of several wind turbines on a grassy hill under a clear sky. The turbines are white and stand tall against the landscape. The foreground shows a grassy slope leading up to the turbines.

# Local energy provider for nearly 150 years.

- Washington's largest and oldest utility, **servicing 1.5 million customers** in 10 counties.
- Our **3,100+ employees** live and work in the communities we serve.
- We share our customers' **concern for the environment**, balanced with their expectations for uncompromised **reliability, affordability and safety**.

---

**“Climate change is an existential threat that cannot be ignored, and we are doing our part to move further and faster to save our planet.”**

— PSE President and CEO Mary Kipp

---

**By 2045,  
we aspire to  
be a Beyond  
Net Zero  
Carbon  
energy  
company.**

- We envision the energy we provide **slowing climate change**.
- Target: **Reduce our own carbon emissions to net zero** and go beyond by **helping other sectors** enable carbon reduction across Washington.
- Holistic approach encompasses our **entire energy supply**—both electric and natural gas—our operations, and the positive impact that we can have on other industries and sectors.

# Our three pathways to Beyond Net Zero Carbon.

## PSE operations and electric supply

*We will achieve the following:*

- Net zero carbon emissions for all PSE operations and electric supply by 2030
- 100% carbon free electric supply by 2045

## Natural gas sales customer end use

*Our aspirational objectives:*

- Reduce customer end use carbon emissions 30% by 2030
- Net zero carbon emissions for customer end use by 2045

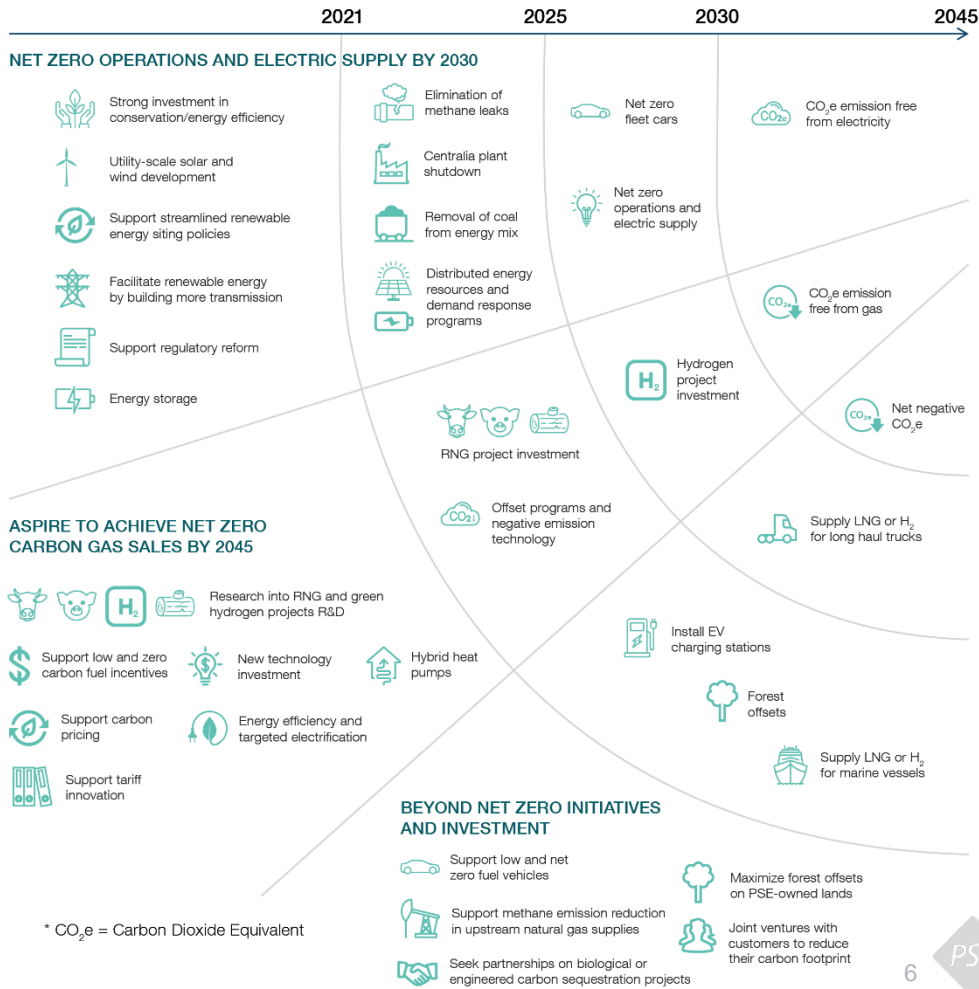
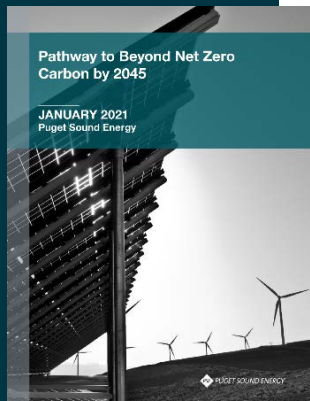
## Beyond PSE reported emissions

*We will help other sectors reduce carbon, including:*

- Electric vehicles
- Liquefied natural gas for marine and long haul trucking
- Renewable natural gas/hydrogen or other low carbon fuels for transportation and other applications
- Upstream methane emission reduction

# Holistic roadmap to Beyond Net Zero Carbon by 2045.

For roadmap details, see PSE's Pathway to Beyond Net Zero Carbon by 2045 published Jan. 2021 on [pse.com](http://pse.com).



# Equitable, sustainable clean energy for all.

- Slowing climate change requires partnership **across all sectors**.
- The energy solutions pursued **must improve the livelihoods of all people**, in particular, those who shoulder an outsized share of the climate burden.
- **Beyond Net Zero Carbon by 2045 advisory group:** Diverse, external committee of community members, partners, technical experts and others to provide meaningful input and enable opportunities for collective action.

# We believe in the value of piped energy.

- The natural gas **delivery system** is an essential part of the diverse energy supply that serves our customers now and in the future.
- PSE's system and dedicated employees deliver energy safely every day through a massive network **connected to our customers' homes and businesses.**
- We are **neutral** about what goes into the network of pipes—mostly natural gas today but includes **renewable natural gas**, and in the future will likely have alternative fuels such as **hydrogen.**



# Beyond Net Zero Carbon

**TOGETHER, creating a clean energy future for all.**

Thank you.



## Resources

## PSE RESOURCE LIST

---

- PSE's clean energy commitment and Beyond Net Zero Carbon goal: <https://www.pse.com/pages/together>
- PSE's "Pathway to Beyond Net Zero Carbon by 2045" report: [https://www.pse.com/-/media/PDFs/Press-release/7535\\_Pathway\\_to\\_Beyond\\_Net\\_Zero\\_Report.pdf](https://www.pse.com/-/media/PDFs/Press-release/7535_Pathway_to_Beyond_Net_Zero_Report.pdf)
- PSE's Beyond Net Zero Carbon by 2045 pledge: <https://www.pse.com/-/media/PDFs/Press-release/7527-NetZeroPledge.pdf>
- PSE sets "Beyond Net Zero Carbon" goal media release: <https://www.pse.com/press-release/details/pse-sets-beyond-net-zero-carbon-goal>
- PSE's greenhouse gas policy statement: <https://www.pse.com/pages/greenhouse-gas-policy>
- PSE's Clean Energy Implementation Plan information and Equity Advisory Group: <http://cleanenergyplan.pse.com>
- PSE's Beyond Net Zero Carbon by 2045 video (0:30): <https://www.youtube.com/watch?v=M02lflhaLmk>