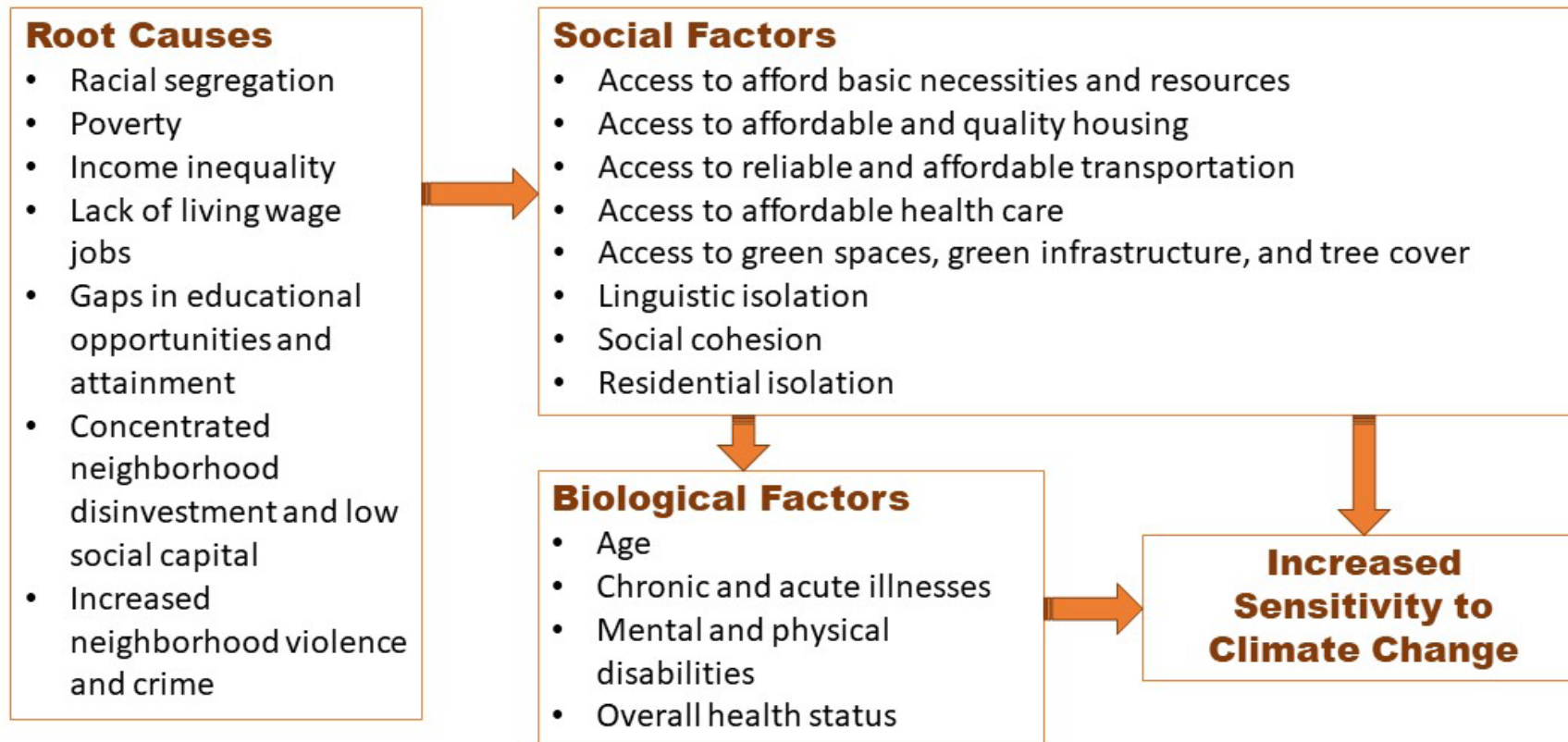


# Climate Equity Assessment

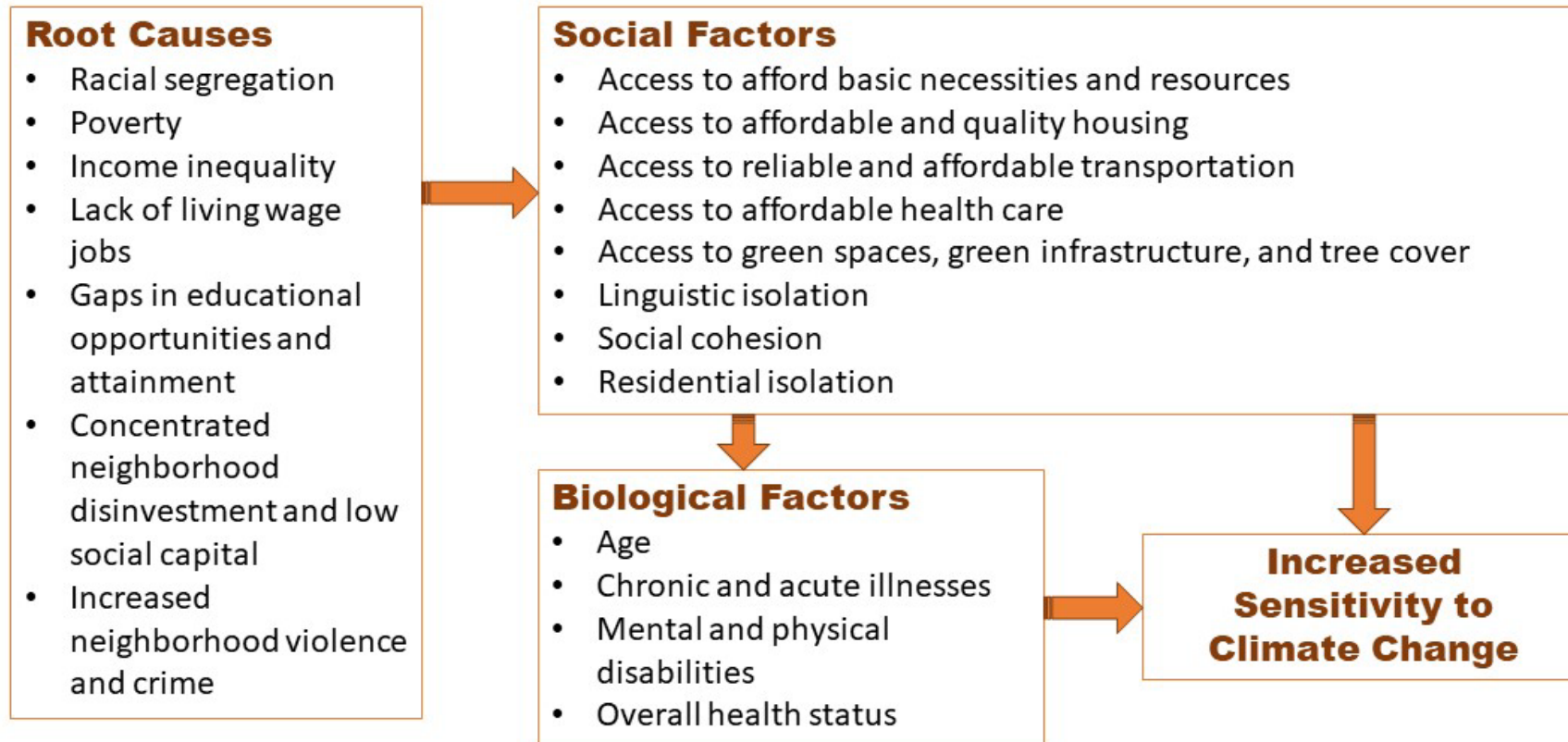
Climate Action Steering Committee

July 28, 2021

# Climate change impacts everyone, but some are more vulnerable...



# Climate mitigation action is not inherently just.



## Equity in TCMP

### *Guiding Principle #7*

- *Consider how the costs and benefits of mitigation actions will be shared across all communities: including both urban and rural areas, low-income households, communities of color, and other populations that have historically been impacted by environmental hazards or are otherwise vulnerable to climate impacts.*

# Equity Resources

- Equity Scan for the 2013 Portland/Multnomah County Climate Action Plan Update (2013)
- The Local and Regional Government Alliance on Race & Equity Racial Equity Toolkit (2016)
- Urban Sustainability Directors Network Guide to Equitable Community-Driven Climate Preparedness Planning (2017)
- The Georgetown Climate Center Equitable Adaptation Legal & Policy Toolkit
- The Greenlining Institute, Making Equity Real in Climate Adaptation and Community Resilience Policies and Programs Guidebook (2019)
- Maine Climate Council, Assessing the Potential Equity Outcomes of Maine's Climate Action Plan (2020)
- Sustainable & Resilient Frontline Communities section of the King County Strategic Climate Action Plan (2020)
- Front and Centered, Accelerating a Just Transition in Washington State (2020)

# Strategy Assessment

---

What impacted or vulnerable communities could benefit from or be burdened by this strategy or action?

---

How could the strategy or action benefit or burden vulnerable populations, increase or decrease equity? Any unintended consequences?

---

What are ways to enhance positive impacts or reduce negative impacts of the strategy or action?

# Existing Disparities

<b>Buildings &amp; Energy</b>	<ul style="list-style-type: none"><li>• Access to/cost of housing</li><li>• Housing quality/environmental conditions</li><li>• Energy cost burden</li><li>• Heat sources</li></ul>
<b>Transportation &amp; Land Use</b>	<ul style="list-style-type: none"><li>• Access to/cost of transportation</li><li>• Air quality exposure</li><li>• Health outcomes</li><li>• Car ownership/transit use</li><li>• Broadband/internet access</li></ul>
<b>Water &amp; Waste</b>	<ul style="list-style-type: none"><li>• Utility costs</li><li>• Access to infrastructure</li></ul>
<b>Agriculture &amp; Open Space</b>	<ul style="list-style-type: none"><li>• Access to open space</li><li>• Tree canopy cover</li></ul>
<b>Cross-cutting</b>	<ul style="list-style-type: none"><li>• Awareness of/capacity to participate in incentive or education programs</li><li>• Representation in workforce/contracting</li><li>• Access to capital/lending</li></ul>

## Environmental Exposures & Effects\*

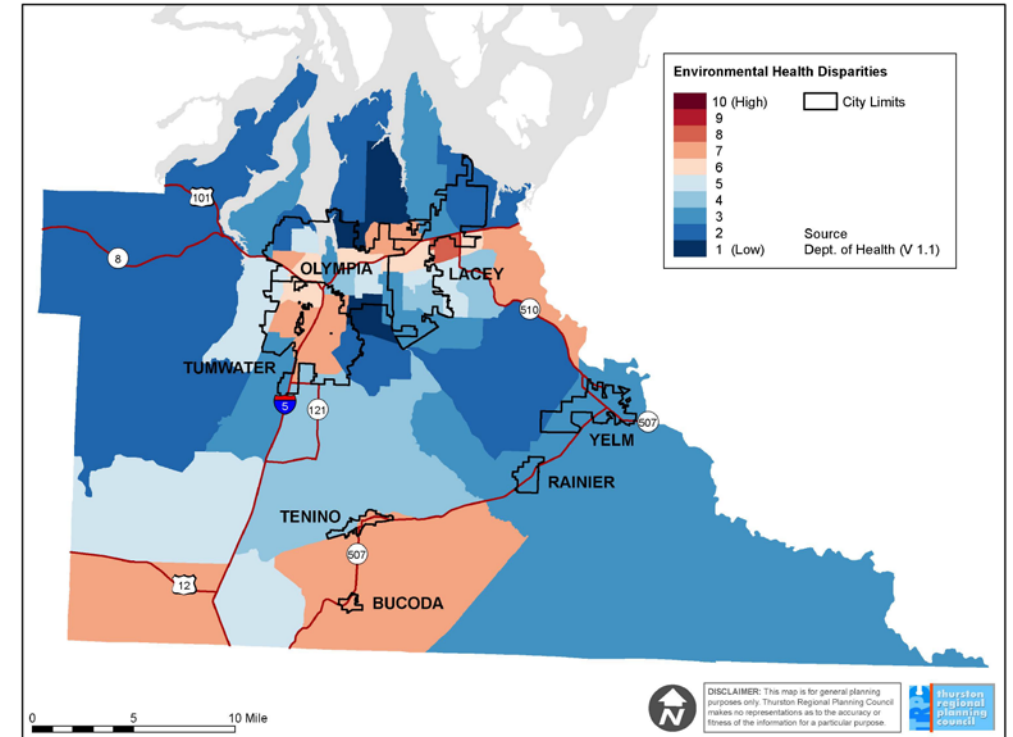


## Sensitive Populations & Socioeconomic Factors\*



## Disparity Rank

\*Icons shown do not represent all 19 indicators on the map



## Health Disparities

- Washington State Environmental Health Disparities Map: <https://www.doh.wa.gov/DataandStatisticalReports/WashingtonTrackingNetworkWTN/InformationbyLocation/WashingtonEnvironmentalHealthDisparitiesMap>



Ways to  
enhance  
positive  
impacts &  
reduce burdens

---

Better define and understand vulnerable and impacted communities

---

Target outreach about and/or access to programs to impacted communities.

---

Develop incentives with input from impacted communities.

---

Pair broad requirements or regulations with targeted funding, resources, or allowances for impacted communities

---

Contracting/hiring targets for underrepresented populations.

---

Track equity outcomes of state and local actions

## Discussion

---

How would CASC members like to see equity included in implementation of climate mitigation actions?

---

Are there existing efforts at jurisdictions that should be coordinated?