

GRAND MOUND TRANSPORTATION STUDY



Background

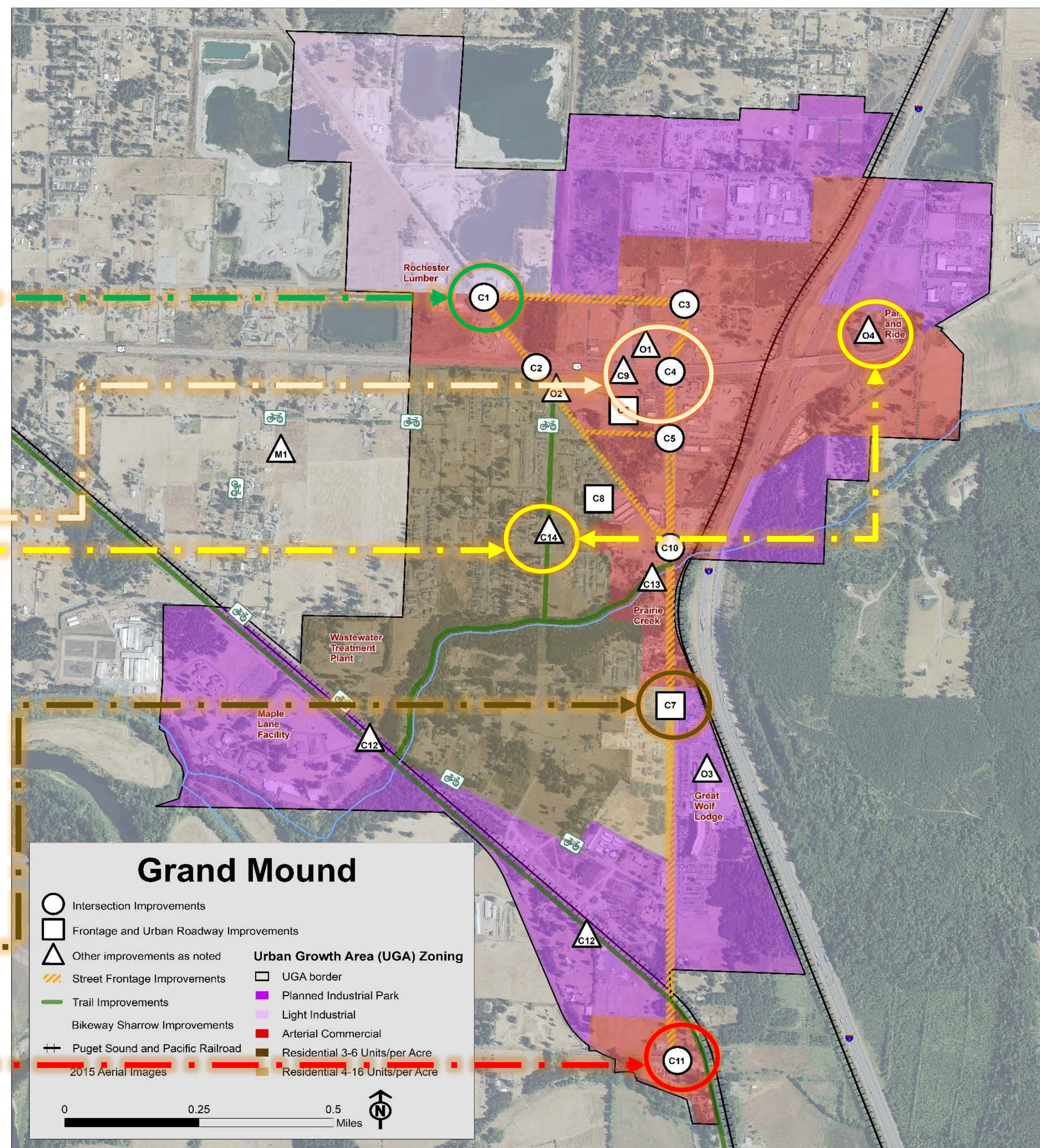
Grand Mound is growing! Thurston County is looking into ways to ensure the transportation network keeps pace with land use changes and the community's vision.

Project Schedule



Draft Goals

- Safety** ← Transportation infrastructure in Grand Mound provides safe options for all users.
- Efficient** ← Roadways and intersections have adequate capacity and function with acceptable levels of congestion for autos and freight, even as the region grows.
- Character** ← Transportation infrastructure contributes to Grand Mound's identity as a distinctive place with rural character.
- Connections** ← Grand Mound's transportation system accommodates multi-modal connections (including walking and biking) to residential and commercial areas, regional trails, and transit.
- Economic Diversity** ← Transportation facilities support economic growth in Grand Mound, including residential, commercial, jobs, and tourism.



Grand Mound Urban Growth Area Draft Transportation Actions

- C1:** Intersection Improvements — 196th & Sargent
- C2:** Intersection Improvements — US 12 & Sargent (Construction 2021)
- C3:** Intersection Improvements — 196th & Elderberry
- C4:** Intersection Improvements — US 12 & Elderberry/Old Hwy 99
- C5:** Intersection Improvements — 198th & Old Hwy 99 (Construction 2019)
- C6:** Frontage Improvements — 198th
- C7:** Urban Roadway Improvements — Old Hwy 99, from US 12 to Old Hwy 9
- C8:** Frontage Improvements — Sargent, from 198th to Old Hwy 99
- C9:** Pedestrian Crossing Improvements — US 12
- C10:** Intersection Improvements — Sargent & Old Hwy 99, and Sargent & 201st
- C11:** Intersection Improvements — Old Hwy 9 and Old Hwy 99
- C12:** New Trail — Gate-Rochester-Grand Mound Trail
- C13:** New Trail/Park — Old Hwy 99 and Prairie Creek
- C14:** New Trail — Along Powerlines, from 203rd to 198th
- O1:** Stormwater Pond Improvements — US 12 & Elderberry/Old Hwy 99
- O2:** Gateway Signage — US 12 & Sargent
- O3:** Transit — Bus Shelters & Stops in Grand Mound
- O4:** Park-and-Ride Lot Improvements — Old Hwy 99
- M1:** Designated Bike Route — 198th, Tea St. & Grand Mound Way