

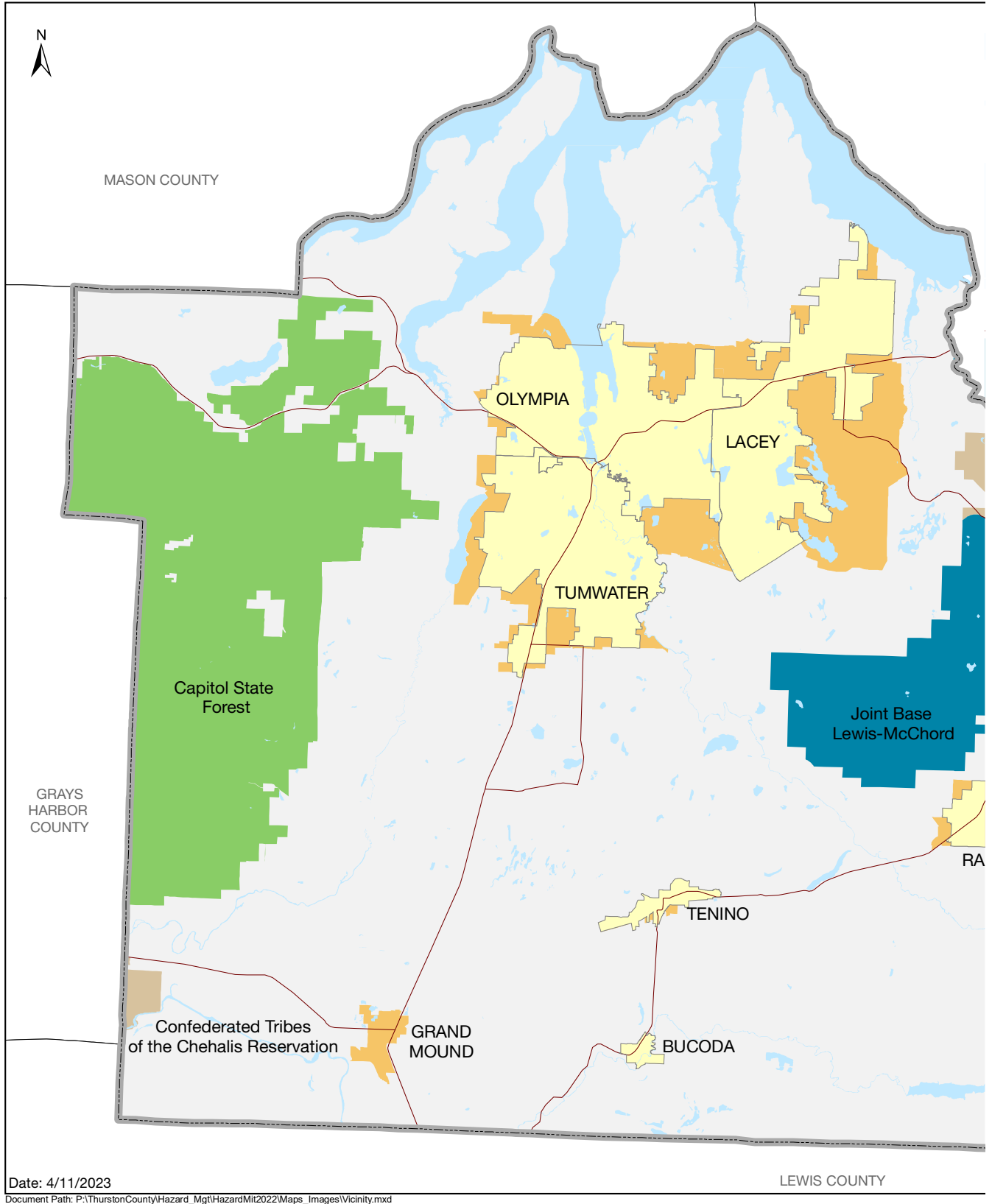
Appendix A

Community Profile Maps and Tables

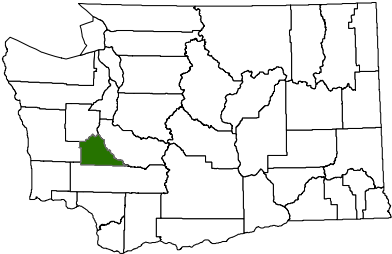
Contents

Map A1 Cities, Towns, Reservations and Public Lands of Thurston County.....	ApxA-2
Map A2 Thurston County Land Cover, 2016	ApxA-4
Map A3 Thurston County Population Density, 2022.....	ApxA-6
Map A4 Thurston County Population Density, 2045.....	ApxA-8
Map A5 Thurston County Housing Density, 2022	ApxA-10
Map A6 Thurston County Housing Density, 2045	ApxA-12
Map A7 Schools and School Districts, Thurston County, WA.....	ApxA-14
Map A8 Thurston County Fire Protection Districts.....	ApxA-16
Map A9 Intermodal and Multimodal Transportation Facilities in Thurston County	ApxA-18
Map A10 Multimodal Transportation Facilities in Thurston County	ApxA-20
Table A1 Thurston County Land Area, 2021	ApxA-22
Table A2 Land Cover and Impervious Area, Thurston County 2016.....	ApxA-23
Table A3 Population Estimates and Forecast, Thurston County Cities, Urban Growth Areas, and Reservations, 2010 to 2045.....	ApxA-24
Table A4 Social Vulnerability Metrics by Thurston County Jurisdiction	ApxA-25
Table A5 Thurston County Point-in-Time Homeless Count	ApxA-28
Table A6 Students Experiencing Homelessness by Thurston County School District	ApxA-28
Table A7 Median Household Income by Thurston County Jurisdiction, 2017-2021	ApxA-29
Table A8 Housing Estimates and Forecast, Thurston County Cities, Urban Growth Areas, and Reservations, 2010 to 2045	ApxA-30
Table A9 Housing Estimates by Type, Thurston County Cities, Urban Growth Areas, and Reservations, 2022	ApxA-31
Table A10 Residential Units Permitted, by Jurisdiction, 2017-2021.....	ApxA-32
Table A11 Population Estimate and Forecast by School District, 2020-2045.....	ApxA-33
Table A12 Population Estimate and Forecast by Fire District, 2020-2045.....	ApxA-34

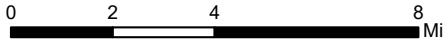
Map A1 Cities, Towns, Reservations and Public Lands of Thurston County



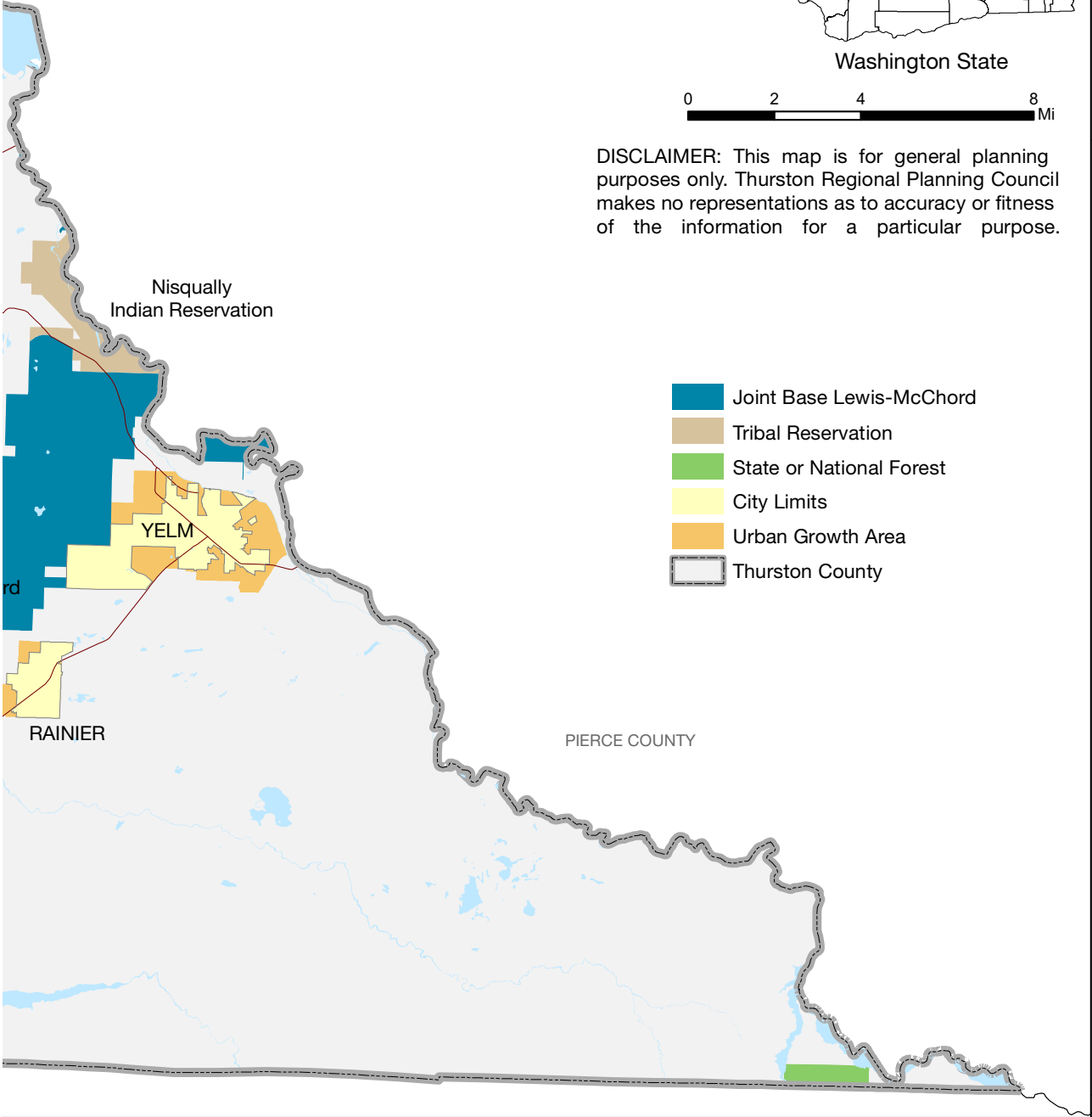
Cities, Towns, Reservations, and Public Lands of Thurston County



Washington State

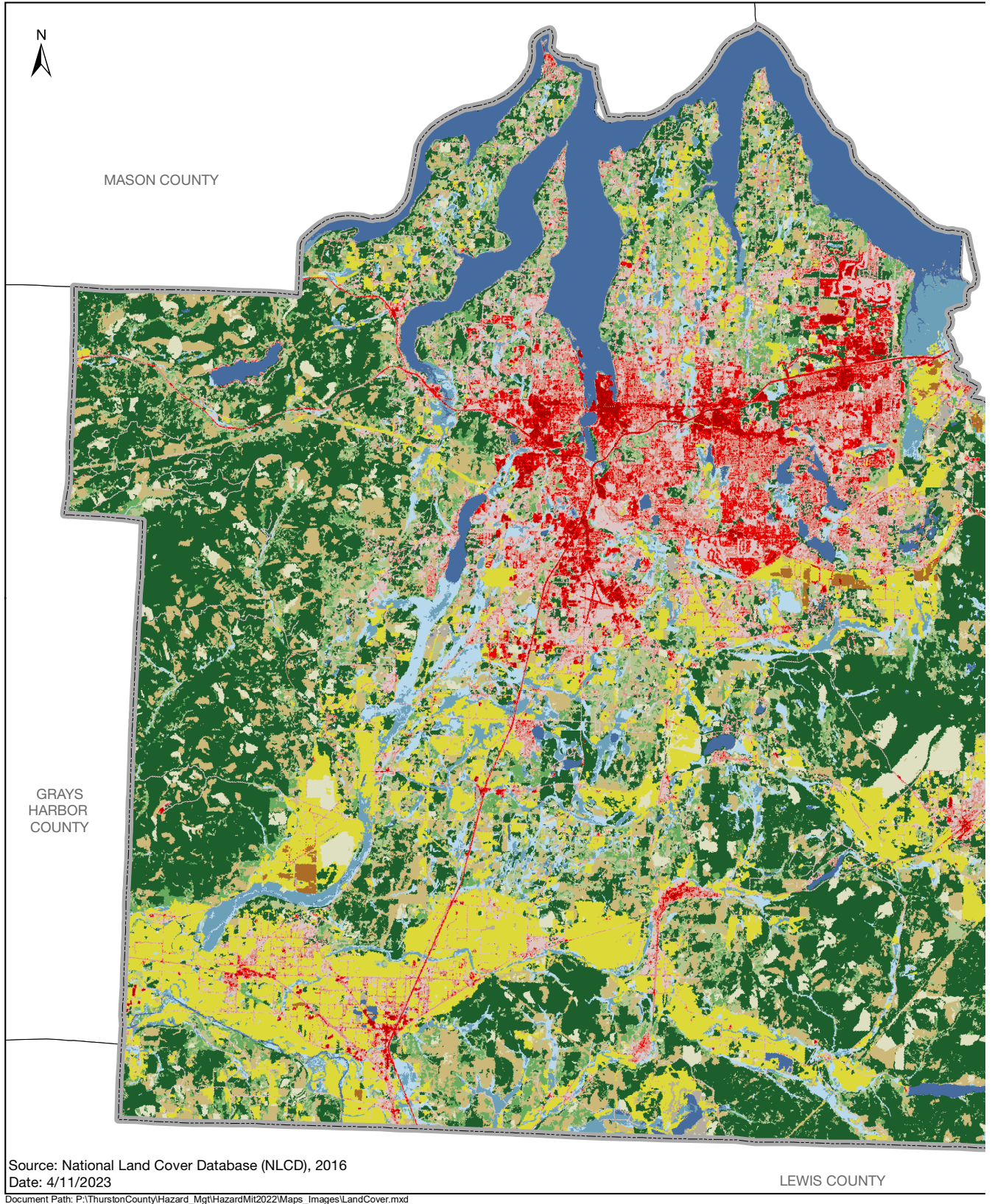


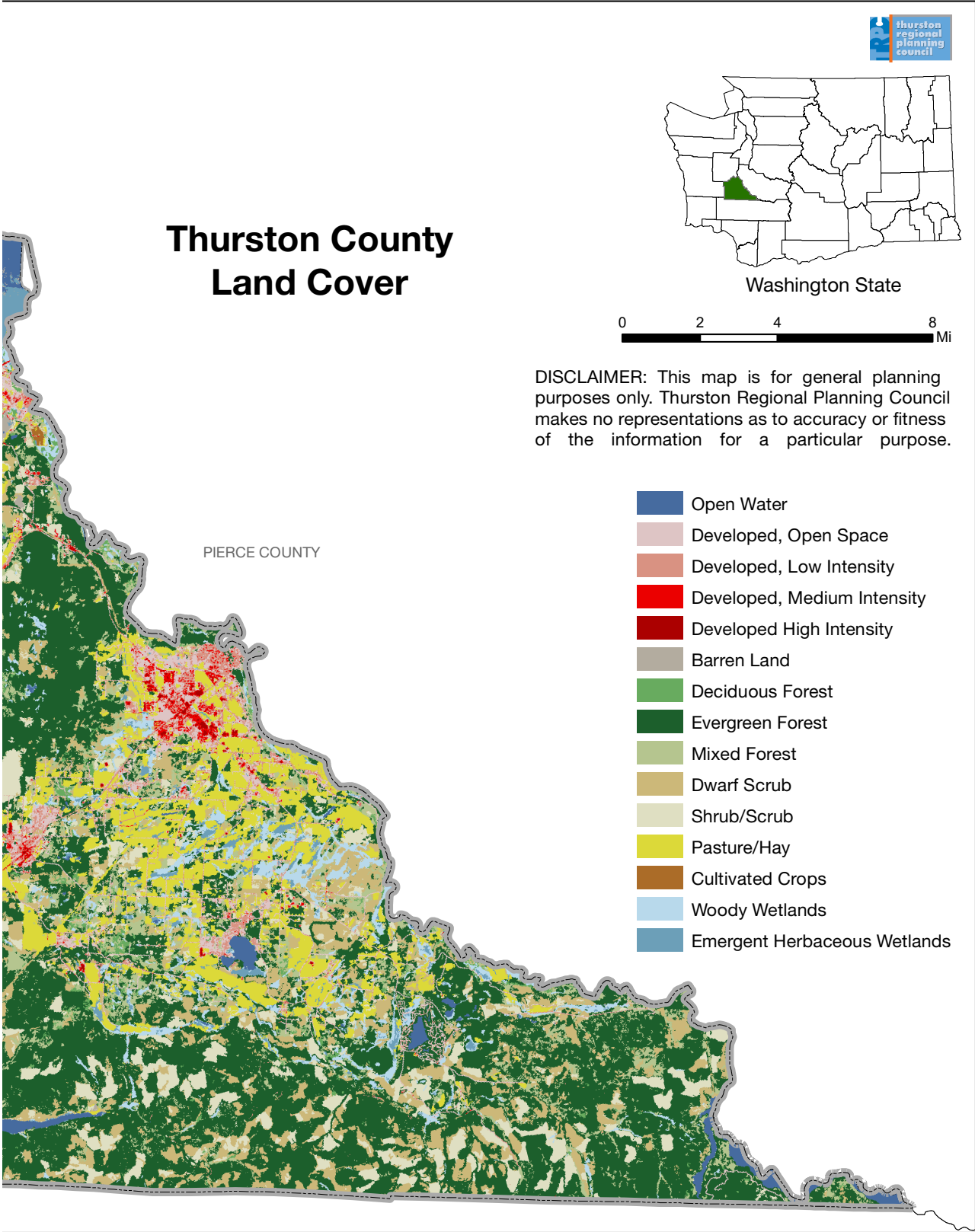
DISCLAIMER: This map is for general planning purposes only. Thurston Regional Planning Council makes no representations as to accuracy or fitness of the information for a particular purpose.



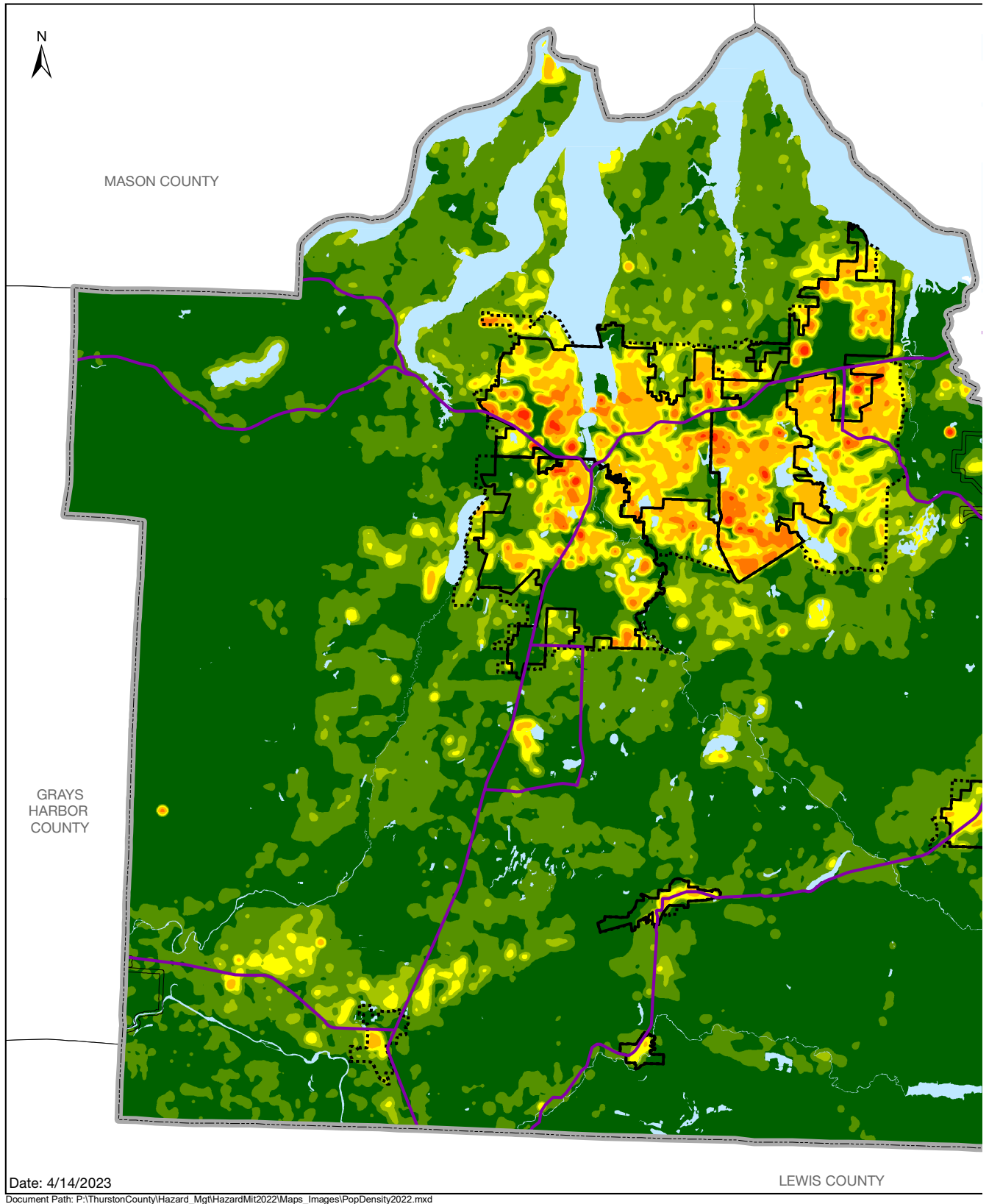
- Joint Base Lewis-McChord
- Tribal Reservation
- State or National Forest
- City Limits
- Urban Growth Area
- Thurston County

Map A2 Thurston County Land Cover, 2016



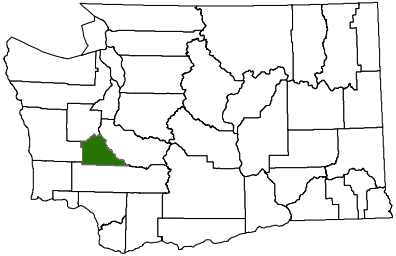


Map A3 Thurston County Population Density, 2022

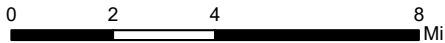




Thurston County Population Density, 2022



Washington State



DISCLAIMER: This map is for general planning purposes only. Thurston Regional Planning Council makes no representations as to accuracy or fitness of the information for a particular purpose.

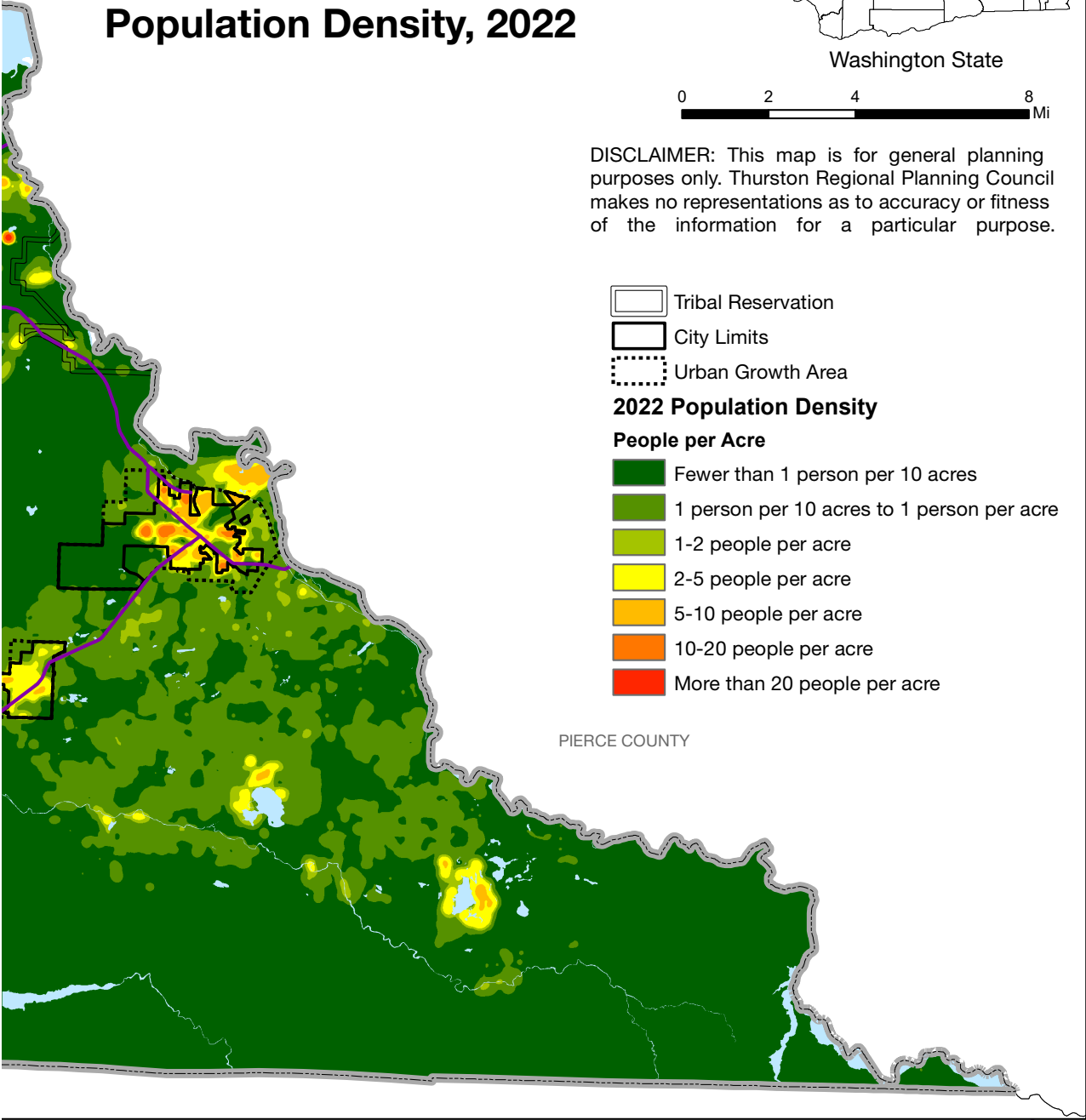
- Tribal Reservation
- City Limits
- Urban Growth Area

2022 Population Density

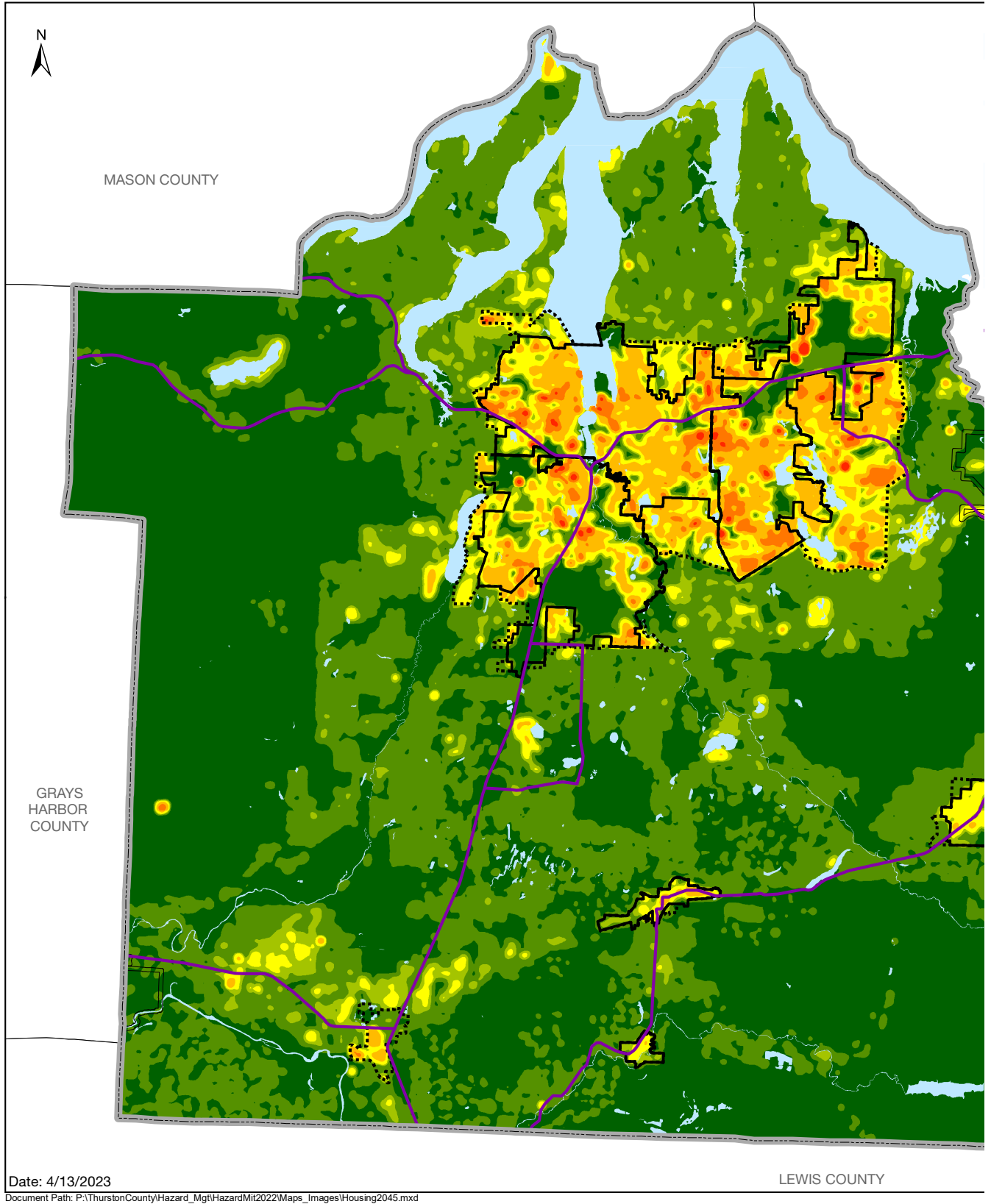
People per Acre

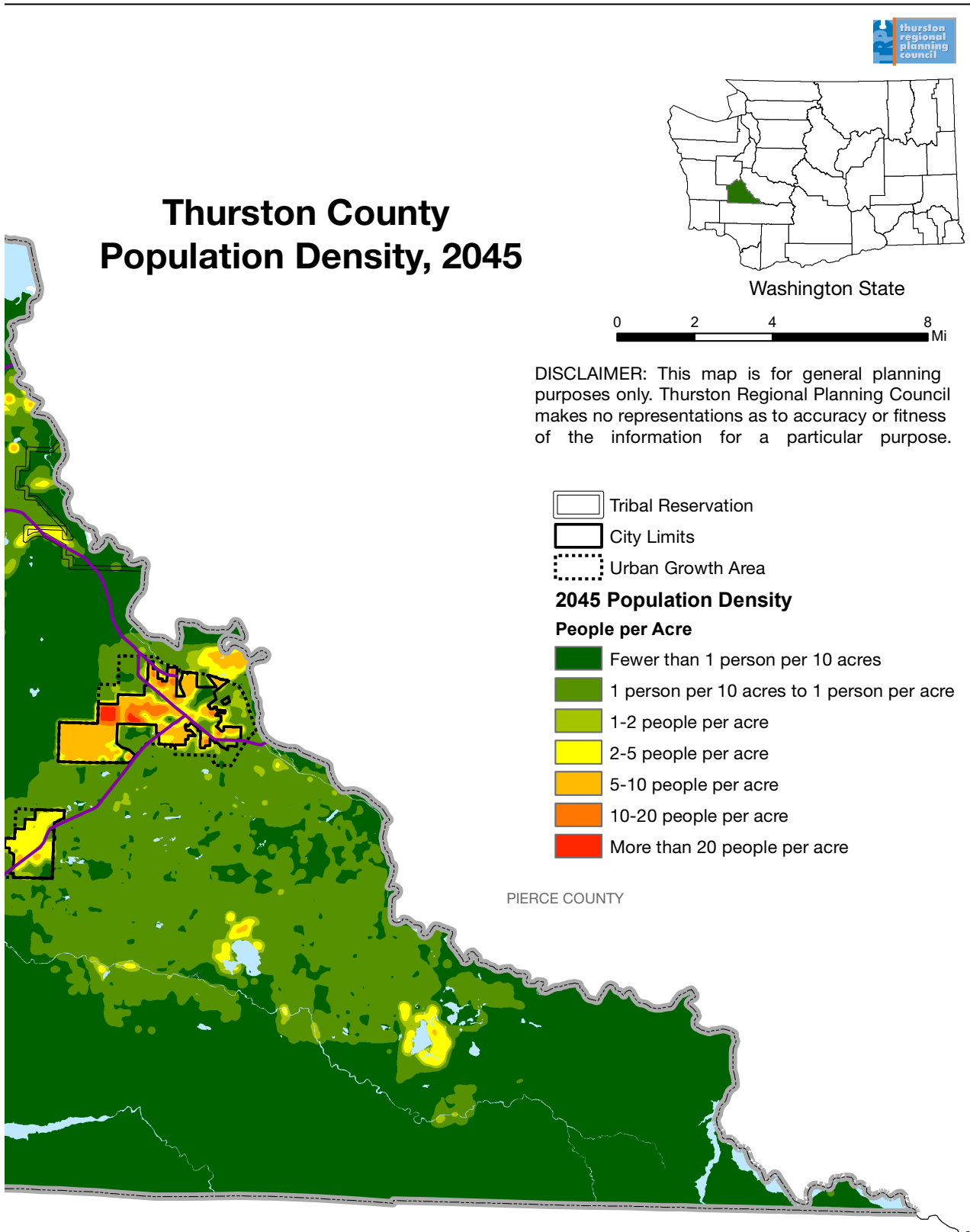
- Fewer than 1 person per 10 acres
- 1 person per 10 acres to 1 person per acre
- 1-2 people per acre
- 2-5 people per acre
- 5-10 people per acre
- 10-20 people per acre
- More than 20 people per acre

PIERCE COUNTY

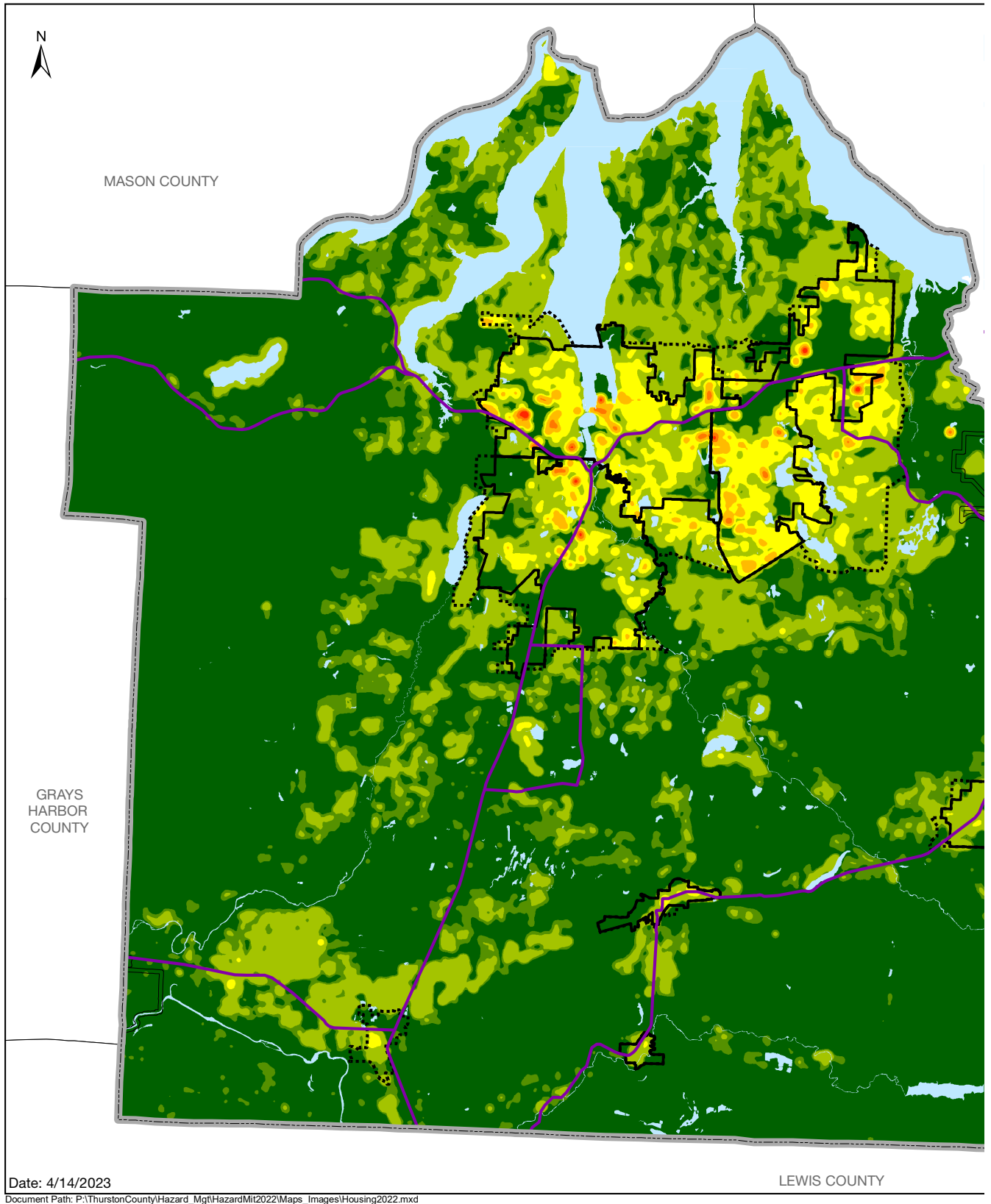


Map A4 Thurston County Population Density, 2045

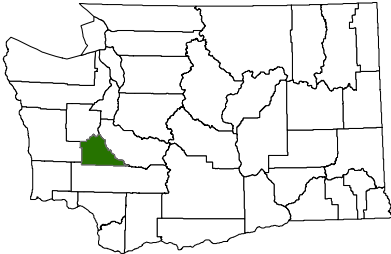




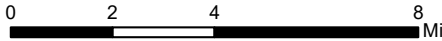
Map A5 Thurston County Housing Density, 2022



Thurston County Housing Density, 2022



Washington State



DISCLAIMER: This map is for general planning purposes only. Thurston Regional Planning Council makes no representations as to accuracy or fitness of the information for a particular purpose.

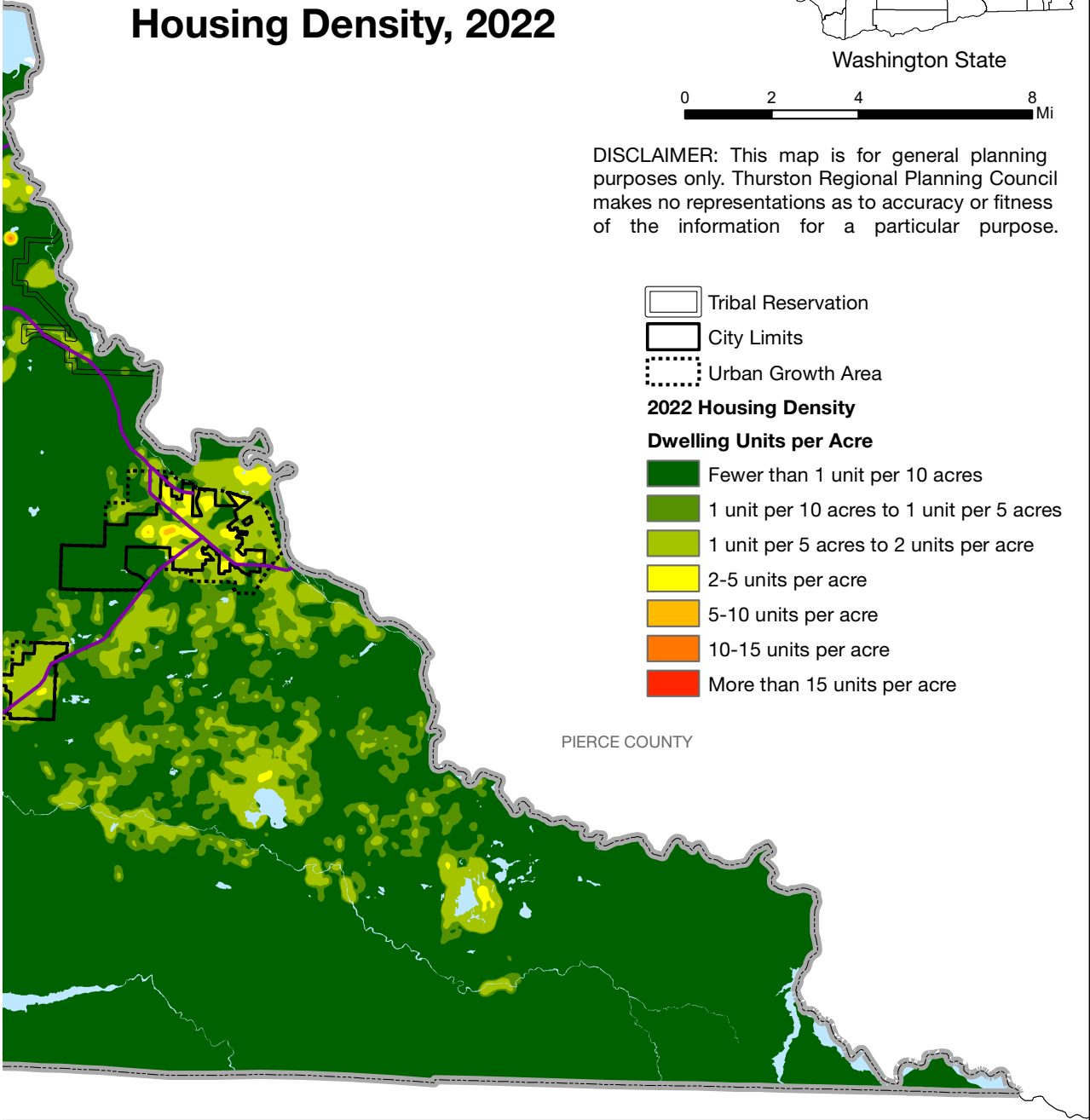
- Tribal Reservation
- City Limits
- Urban Growth Area

2022 Housing Density

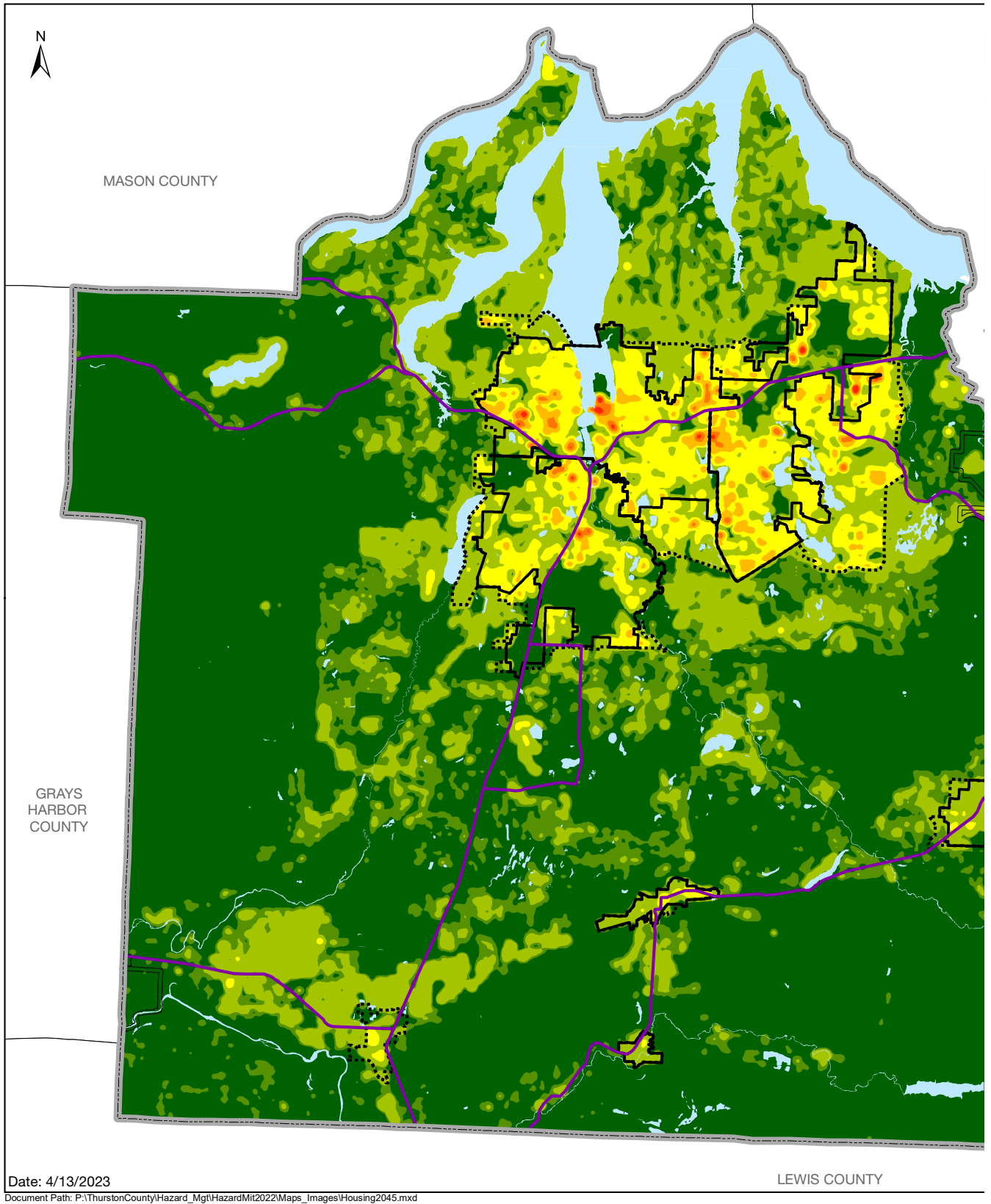
Dwelling Units per Acre

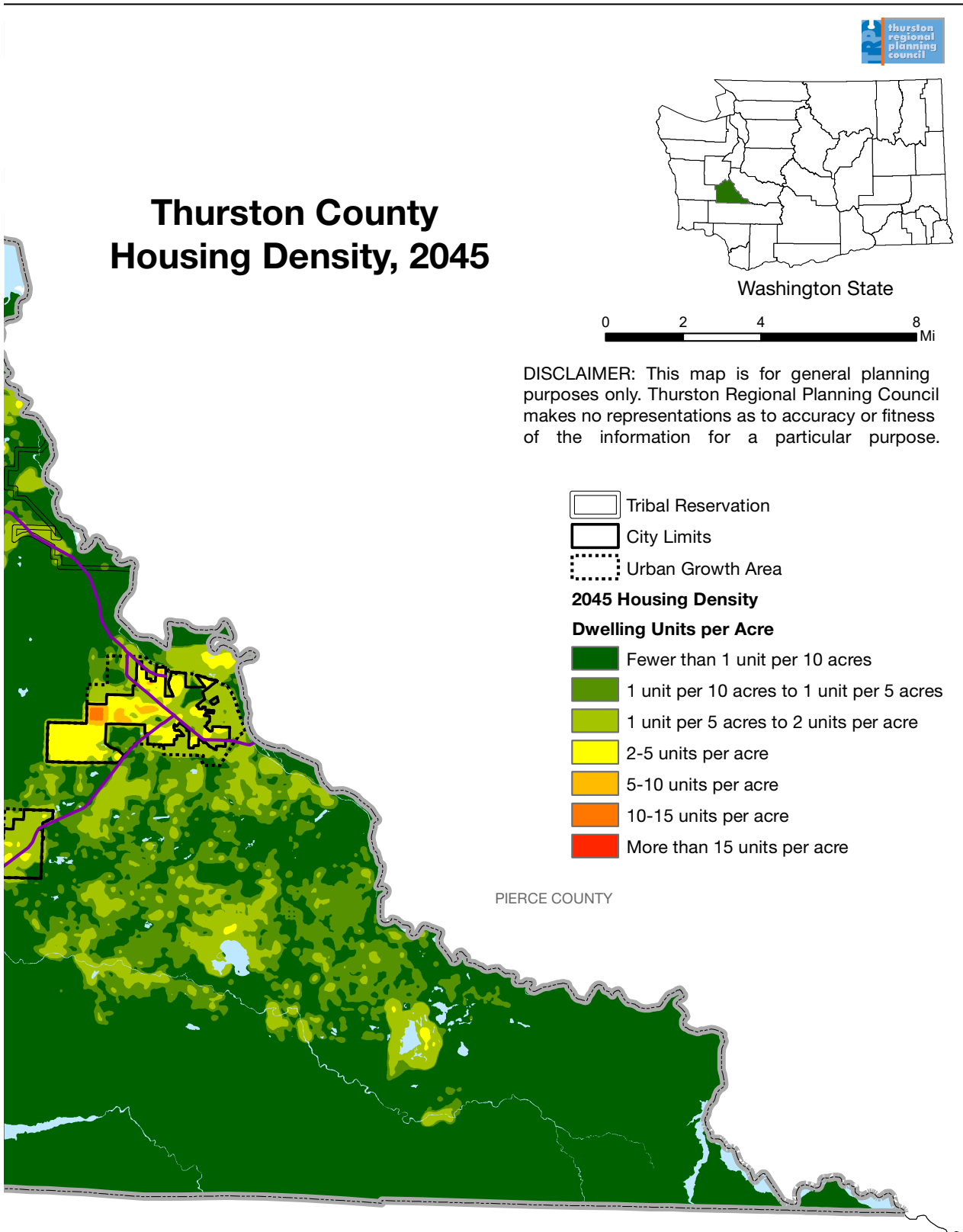
- Fewer than 1 unit per 10 acres
- 1 unit per 10 acres to 1 unit per 5 acres
- 1 unit per 5 acres to 2 units per acre
- 2-5 units per acre
- 5-10 units per acre
- 10-15 units per acre
- More than 15 units per acre

PIERCE COUNTY

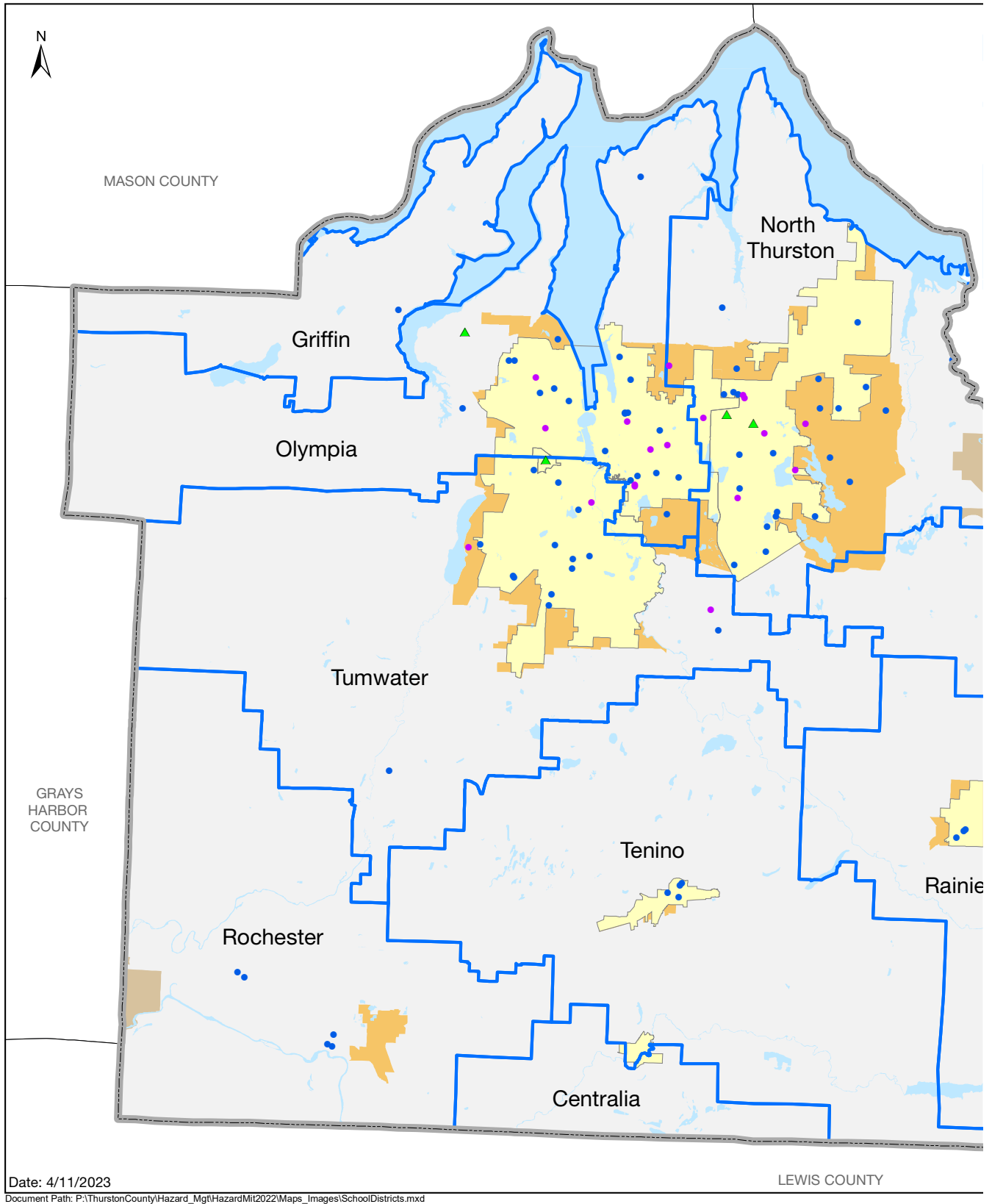


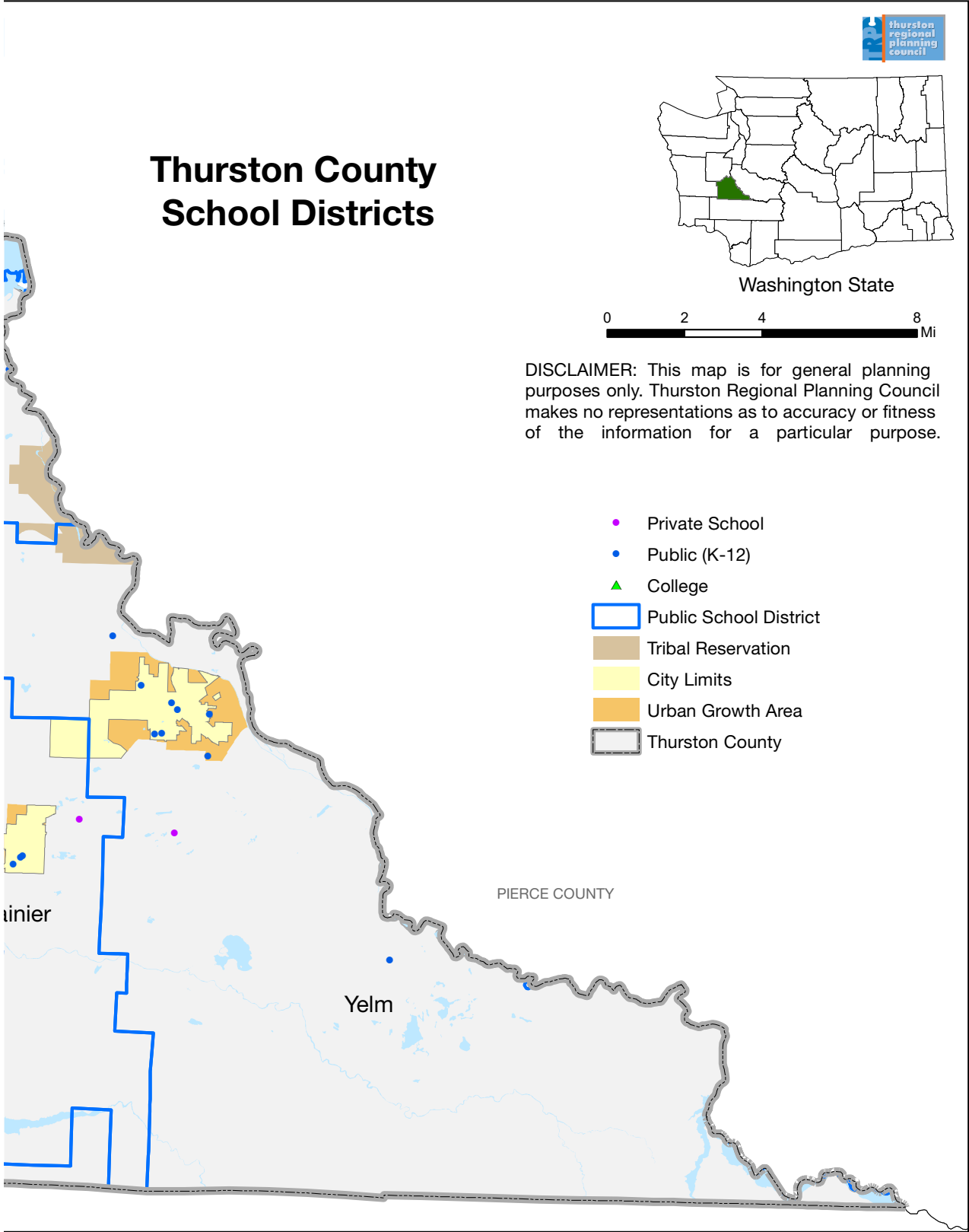
Map A6 Thurston County Housing Density, 2045



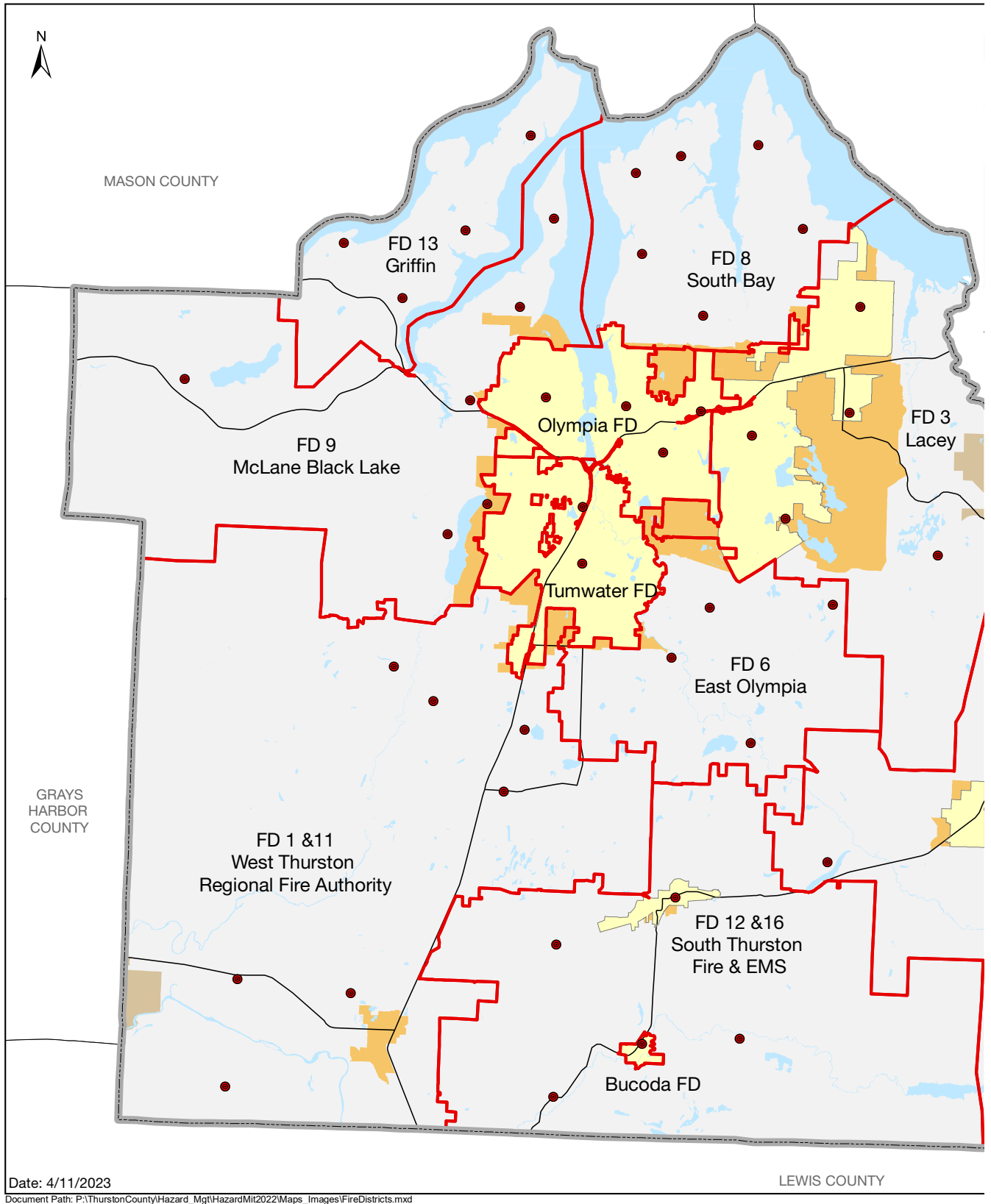


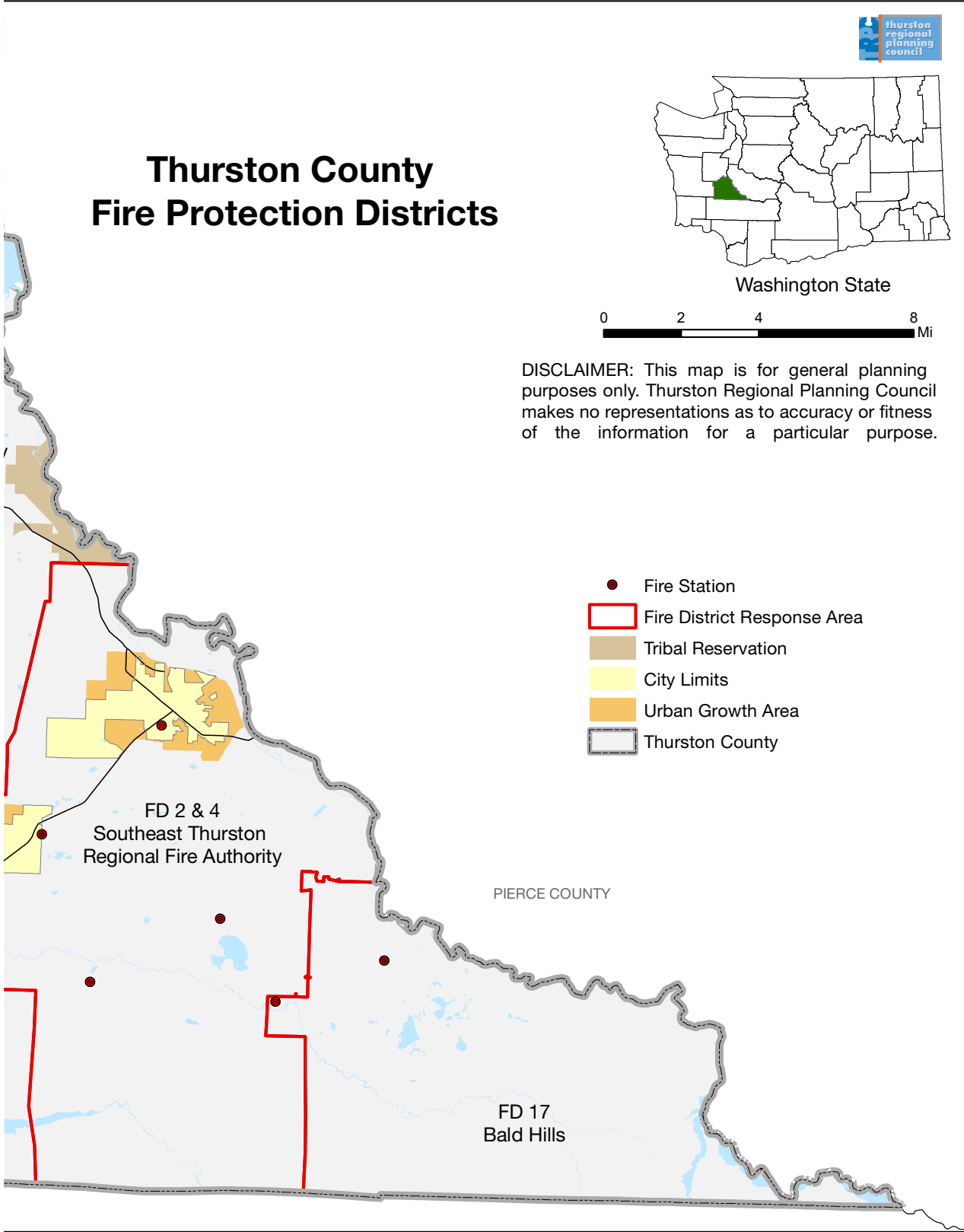
Map A7 Schools and School Districts, Thurston County, WA



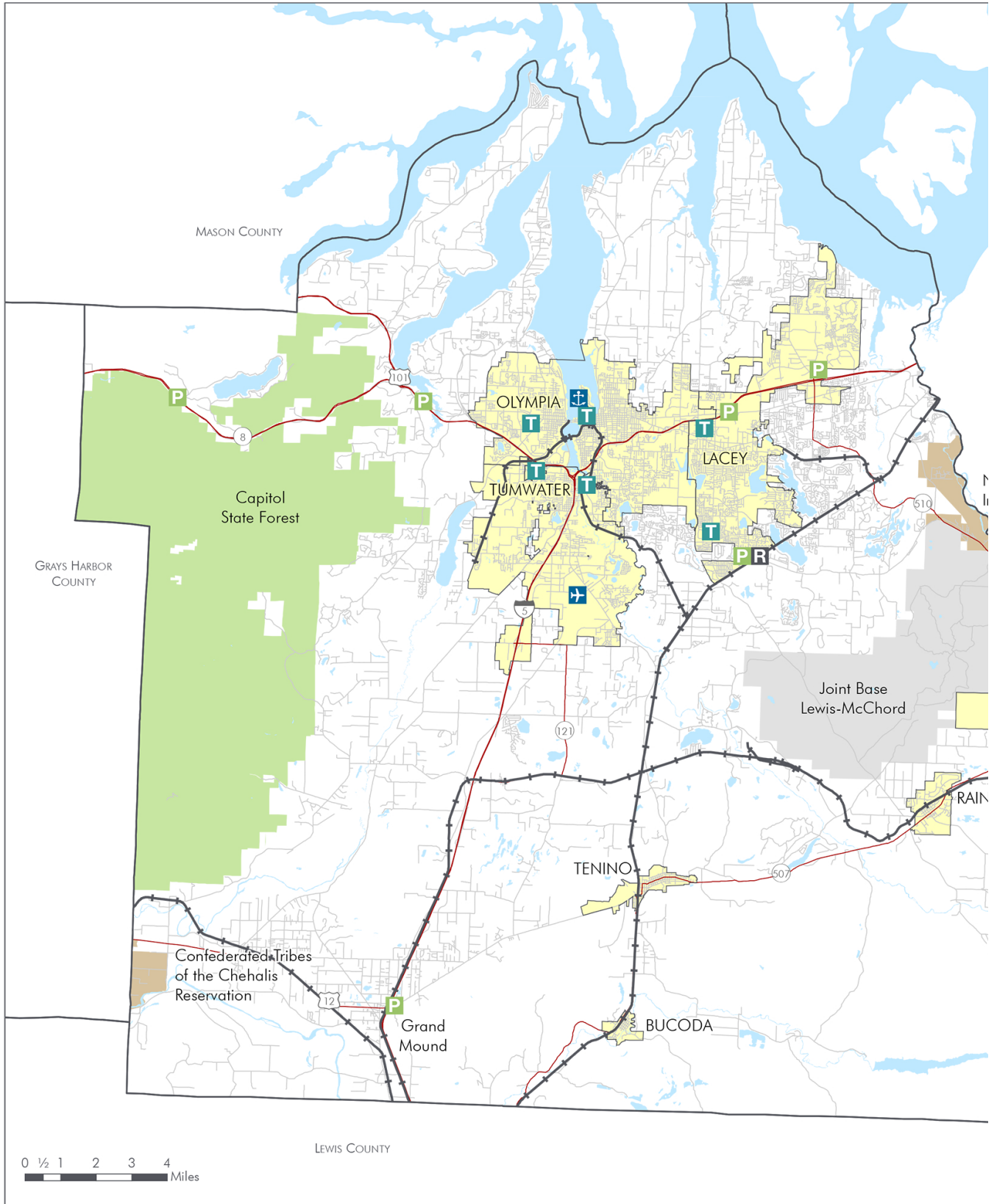


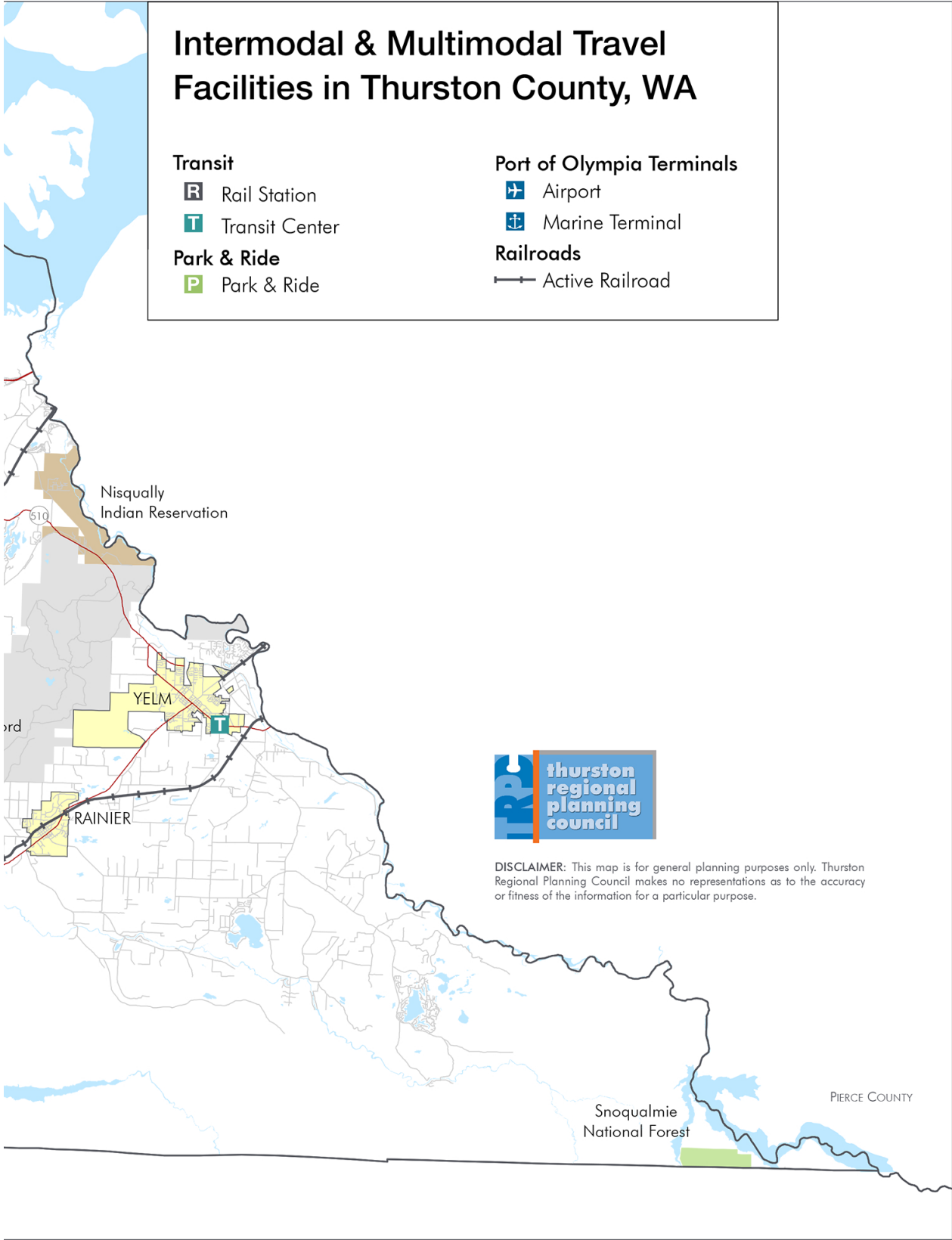
Map A8 Thurston County Fire Protection Districts



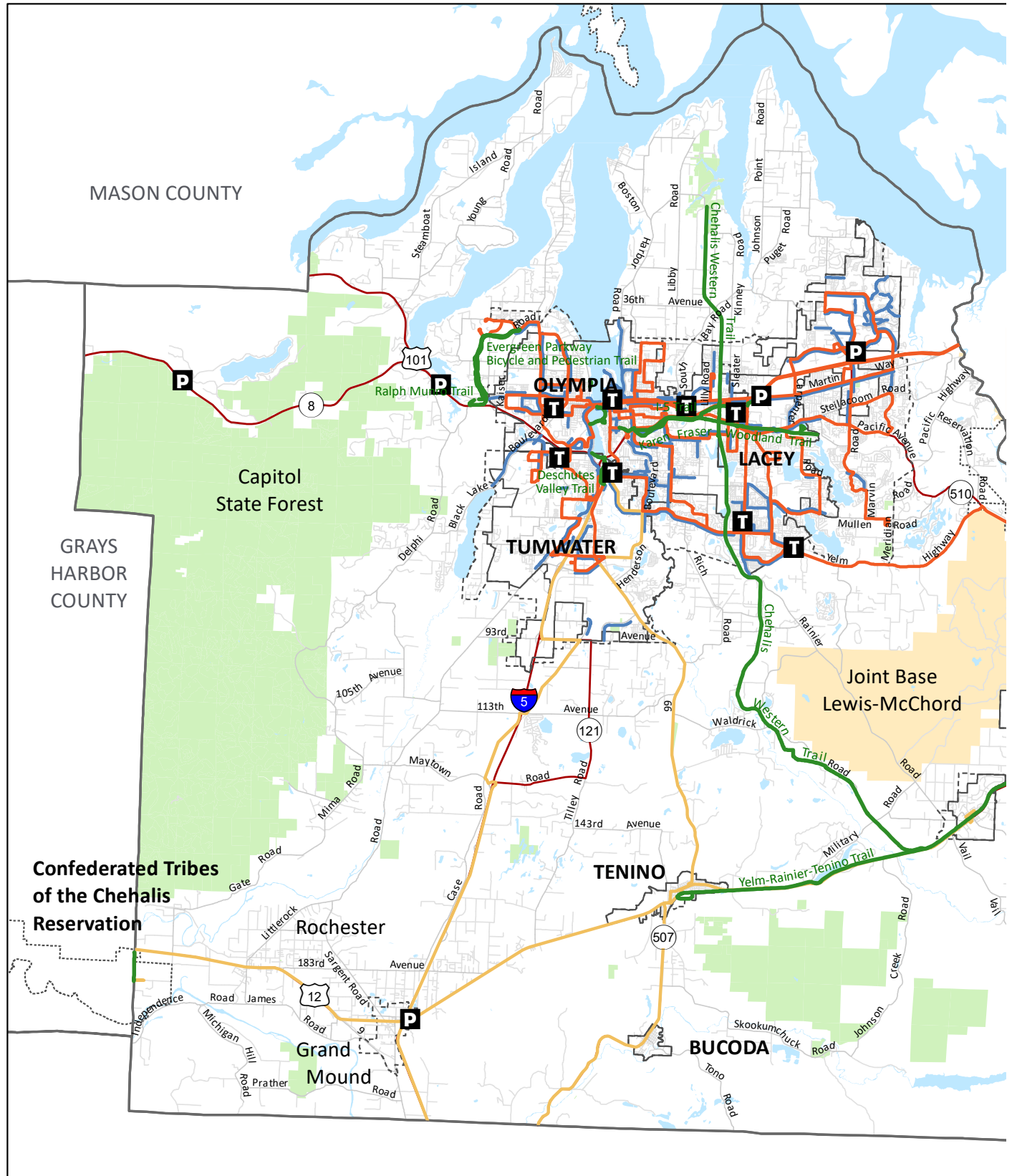


Map A9 Intermodal and Multimodal Transportation Facilities in Thurston County





Map A10 Multimodal Transportation Facilities in Thurston County



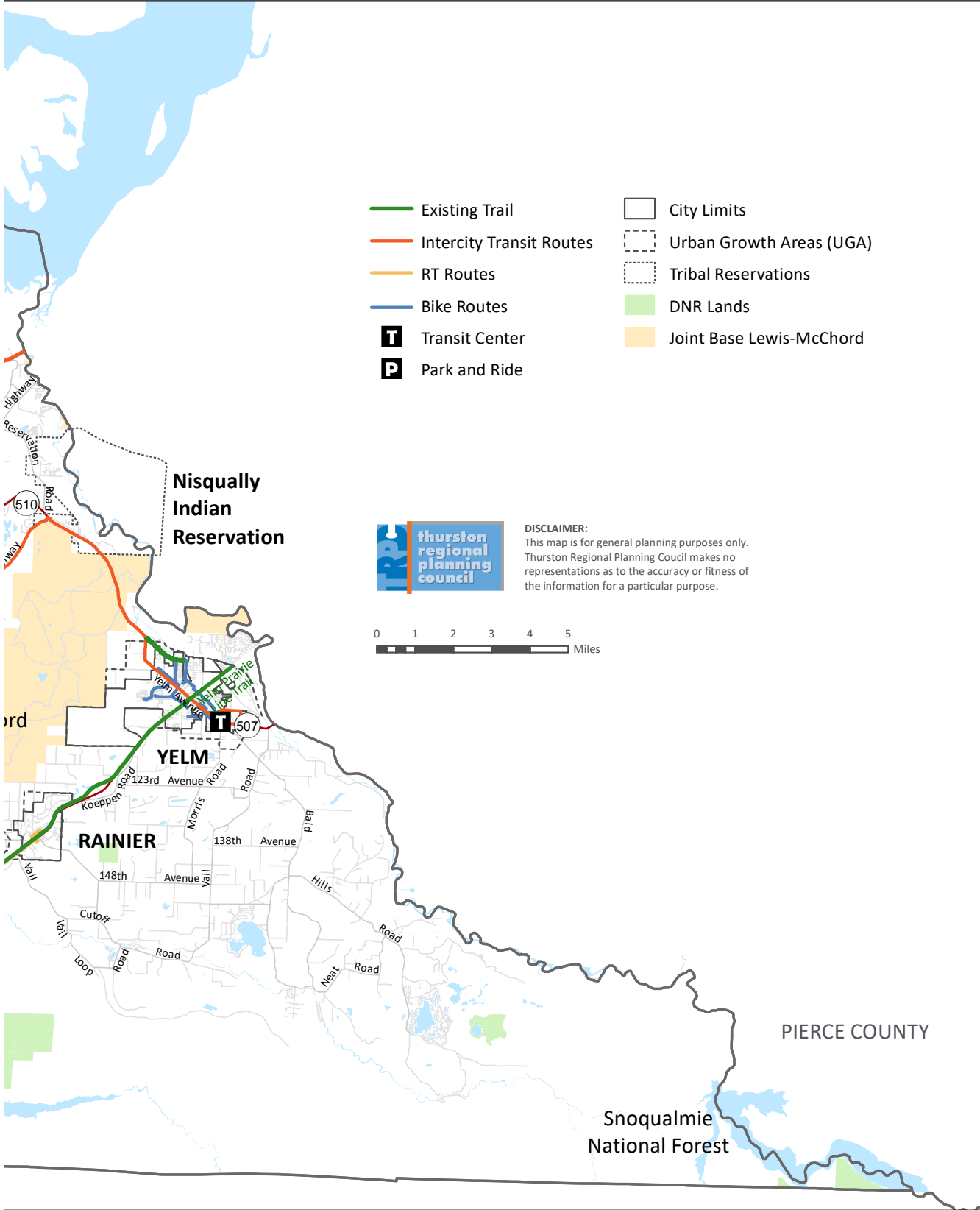


Table A1 Thurston County Land Area, 2021

JURISDICTION		Acres	Square Miles	Percent
Bucoda	City	379	0.6	0.1%
Lacey	City	11,367	17.8	2.3%
	UGA	9,923	15.5	2.0%
Olympia	City	12,858	20.1	2.6%
	UGA	3,913	6.1	0.8%
Rainier	City	1,109	1.7	0.2%
	UGA	316	0.5	0.1%
Tenino	City	916	1.4	0.2%
	UGA	70	0.1	0.0%
Tumwater	City	11,413	17.8	2.3%
	UGA	2,816	4.4	0.6%
Yelm	City	3,659	5.7	0.7%
	UGA	2,368	3.7	0.5%
Grand Mound	UGA	982	1.5	0.2%
Confederated Tribes of the Chehalis Reservation (1)		860	1.3	0.2%
Nisqually Indian Reservation (1)		2,147	3.4	0.4%
Rural Unincorporated County (2)		430,337	672.4	86.9%
Thurston County		495,434	774.1	100.0%

Source: TRPC

Notes: Area includes freshwater lakes and waterbodies. 1) Data are for Thurston County portion of reservations only. 2) "Rural Unincorporated County" is the area outside of city, UGA, and reservation boundaries.

**Table A2 Land Cover and Impervious Area,
Thurston County 2016**

NOAA C-CAP Land Cover	2016 Acreage
High Intensity Developed	3,536
Medium Intensity Developed	10,936
Low Intensity Developed	29,779
Developed Open Space	18,106
Cultivated	6,300
Pasture/Hay	36,832
Grassland	39,718
Deciduous Forest	28,239
Evergreen Forest	140,562
Mixed Forest	50,195
Scrub/Shrub	69,406
Palustrine Forested Wetland	10,673
Palustrine Scrub/Shrub Wetland	8,236
Palustrine Emergent Wetland	8,175
Estuarine Emergent Wetland	205
Unconsolidated Shore	508
Bare Land	2,373
Water	6,394
Palustrine Aquatic Bed	334
Estuarine Aquatic Bed	2
Snow/Ice	2
Total	470,511

Source: NOAA C-CAP

Table A3 Population Estimates and Forecast, Thurston County Cities, Urban Growth Areas, and Reservations, 2010 to 2045

Jurisdiction	Census		TRPC			TRPC Forecast				
	2010	2020	2021	2022	2023	2025	2030	2035	2040	2045
Bucoda	562	560	595	610		625	685	720	765	800
Lacey	42,393	42,830	54,850	58,180		56,550	57,820	58,970	59,890	60,670
UGA	33,170	33,380	37,330	34,770		41,480	44,550	47,050	49,850	52,770
Total	75,560	76,210	92,180	92,950		98,030	102,370	106,020	109,740	113,440
Olympia	46,478	46,780	55,960	56,370		58,840	62,980	66,960	69,760	72,040
UGA	11,840	11,910	12,510	12,620		13,270	13,390	13,730	14,610	15,610
Total	58,320	58,690	68,470	68,990		72,110	76,370	80,690	84,370	87,650
Rainier	1,794	1,825	2,440	2,510		2,350	2,570	2,725	3,075	3,165
UGA	110	110	125	125		115	120	130	135	160
Total	1,905	1,935	2,565	2,635		2,465	2,690	2,855	3,210	3,325
Tenino	1,695	1,700	2,010	2,030		2,050	2,310	2,565	2,750	2,790
UGA	15	15	15	15		15	15	15	15	45
Total	1,710	1,715	2,025	2,045		2,065	2,325	2,580	2,765	2,835
Tumwater	17,371	17,570	26,050	26,360		29,120	31,670	34,090	35,920	36,900
UGA	6,350	6,120	3,290	3,380		5,410	7,030	8,240	9,020	9,170
Total	23,720	23,690	29,340	29,740		34,530	38,700	42,330	44,940	46,070
Yelm	6,848	7,008	10,640	10,680		13,610	17,450	20,980	23,980	25,960
UGA	1,355	1,420	1,400	1,540		1,310	1,310	1,330	1,350	1,610
Total	8,205	8,430	12,040	12,220		14,920	18,760	22,310	25,330	27,570
Grand Mound UGA	1,345	1,370	1,220	1,255		1,870	2,270	2,505	2,665	2,745
Chehalis Reservation	64	70	50	50		65	65	65	65	65
Nisqually Reservation	575	595	610	610		855	870	885	905	930
Total Cities	117,141	118,273	152,545	156,740		163,140	175,500	187,010	196,140	202,310
Total UGAs¹	54,180	54,310	55,900	53,700		63,480	68,690	73,010	77,650	82,110
Total Reservations²	639	665	660	660		920	930	950	970	990
Unincorporated County³	80,300	80,850	88,700	89,400		88,960	90,880	93,430	95,940	98,090
County Total	252,264	254,100	256,800	260,100		264,000	267,400	272,700	276,900	281,700

SOURCE: Thurston Regional Planning Council. Small Area Population Estimates and Population and Employment Forecast Work Program, 2022.
 NOTES: Estimates are for April 1 and reflect city limits on that date. A decrease in UGA population is likely due to annexation. Numbers may not add due to rounding. 1) Urban Growth Area (UGA): Unincorporated area designated to be annexed into city limits over 20 years to accommodate urban growth. 2) Reservations: Estimate is for Thurston County portion of reservation only. 3) Rural Unincorporated County is the portion of the unincorporated county that lies outside UGA and Reservation boundaries.

Table A4 Social Vulnerability Metrics by Thurston County Jurisdiction

Household Characteristics

Metric	Percent of Population or Households										
	Thurston County	Bucoda	Lacey	Olympia	Rainier	Tenino	Tumwater	Yelm	Chehalis Reservation	Nisqually Reservation	Unincorporated County
Population over age 5 that speaks English less than "very well"	4%	1%	6%	5%	1%	2%	2%	2%	2%	1%	3%
Population with a disability	14%	21%	14%	15%	23%	15%	11%	13%	16%	22%	13%
Households with children and a single parent	9%	22%	10%	10%	15%	12%	12%	12%	24%	20%	8%
Population under 18	21%	25%	22%	19%	26%	26%	22%	32%	24%	29%	22%
Population 65 and over	17%	18%	18%	18%	13%	12%	12%	7%	13%	19%	19%

Housing & Transportation

Metric	Percent of Households or Population										
	Thurston County	Bucoda	Lacey	Olympia	Rainier	Tenino	Tumwater	Yelm	Chehalis Reservation	Nisqually Reservation	Unincorporated County
Households without a vehicle	5%	2%	7%	8%	0%	2%	5%	5%	4%	7%	3%
Households in structures with 10+ units	10%	0%	14%	25%	0%	14%	10%	9%	0%	0%	2%
Households in manufactured homes	11%	18%	5%	4%	17%	14%	6%	4%	75%	4%	17%
Population in group quarters	2%	0%	3%	3%	0%	0%	1%	1%	4%	0%	1%
Households with more occupants than bedrooms	2%	7%	2%	1%	4%	1%	1%	3%	2%	9%	2%
Households that are renter-occupied	33%	27%	43%	52%	11%	43%	44%	32%	55%	14%	0%

Socioeconomic Status

Metric	Percent of Population or Households										
	Thurston County	Bucoda	Lacey	Olympia	Rainier	Tenino	Tumwater	Yelm	Chehalis Reservation	Nisqually Reservation	Unincorporated County
Population 16 and over that is in the labor force and unemployed	3%	5%	3%	4%	3%	2%	5%	3%	6%	5%	3%
Population 25 and over without a high school diploma or GED	6%	10%	6%	5%	8%	6%	5%	7%	18%	13%	6%
Households that are cost-burdened (>30% of income spent on housing costs)	32%	17%	37%	38%	18%	38%	32%	35%	21%	17%	27%
Households that are severely cost-burdened (>50% of income spent on housing costs)	14%	9%	15%	18%	7%	19%	16%	13%	4%	15%	11%
Population without health insurance	5%	8%	5%	6%	4%	10%	5%	6%	20%	23%	5%
Population with income below 150% of poverty level	17%	34%	18%	22%	23%	29%	17%	18%	30%	20%	14%

Race and Ethnicity

Metric	Percent of Population										
	Thurston County	Bucoda	Lacey	Olympia	Rainier	Tenino	Tumwater	Yelm	Chehalis Reservation	Nisqually Reservation	Unincorporated County
Population identifying as a Person of Color	29%	17%	40%	29%	21%	21%	27%	33%	75%	79%	26%
Population identifying as White/Non-Hispanic	71%	83%	60%	71%	79%	79%	73%	67%	25%	21%	74%
Population identifying as American Indian & Alaska Native*	2%	2%	1%	1%	1%	2%	1%	2%	64%	65%	2%
Population identifying as Asian*	6%	1%	9%	7%	2%	1%	5%	4%	0%	1%	5%
Population identifying as Black/African American*	3%	0%	6%	3%	1%	1%	3%	3%	2%	1%	2%
Population identifying as Native Hawaiian & Pacific Islander*	1%	1%	3%	1%	1%	0%	1%	2%	0%	1%	1%
Population identifying as Other Race*	4%	2%	5%	3%	3%	3%	2%	4%	2%	1%	3%
Population identifying as Two or More Races*	12%	8%	13%	11%	9%	11%	12%	14%	8%	7%	11%
Population identifying as Hispanic or Latino of Any Race	10%	7%	13%	9%	8%	8%	9%	12%	7%	11%	9%

*Includes those identifying as Hispanic or Latinx

Table A5 Thurston County Point-in-Time Homeless Count

COUNTY POINT-IN-TIME COUNT				
	Sheltered	Transitional	Unsheltered	Total
2006	156	163	122	441
2007	249	143	187	579
2008	168	100	194	462
2009	323	203	219	745
2010	181	432	363	976
2011	95	204	267	566
2012	167	377	164	708
2013	113	321	230	664
2014	172	147	257	576
2015	158	155	163	476
2016	223	174	189	586
2017	242	166	171	579
2018	333	182	320	835
2019	236	170	394	800
2020	295	159	541	995
2022	266	49	346	661

Table A6 Students Experiencing Homelessness by Thurston County School District

School Year	SCHOOL DISTRICT								Total
	Griffin	North Thurston	Olympia	Rainier	Rochester	Tenino	Tumwater	Yelm	
2014-15	2	588	344	28	136	15	184	43	1,340
2015-16	5	616	148	35	111	22	135	44	1,116
2016-17	10	696	173	15	95	42	151	56	1,238
2017-18	8	713	204	21	108	43	175	90	1,362
2018-19	6	681	202	14	109	34	189	102	1,337
2019-20	2	655	138	19	101	30	172	150	1,267
2020-21	1	377	91	13	89	18	132	77	798
2021-22	7	480	156	0	81	26	132	154	1,036
2022-23	0	684	169	11	91	31	106	173	1,265

Table A7 Median Household Income by Thurston County Jurisdiction, 2017-2021

Household Income (In 2021 Inflation- Adjusted Dollars)	Bucoda	Lacey	Olympia	Rainier	Tenino	Tumwater	Yelm	Thurston County	Chehalis Reservation	Nisqually Reservation	Washington State
Less than \$10,000	0	994	1,603	36	19	218	196	4,605	11	15	122,237
\$10,000 to \$14,999	9	273	926	9	41	329	23	2,727	22	6	84,336
\$15,000 to \$19,999	16	923	918	45	73	342	22	3,824	13	4	83,289
\$20,000 to \$24,999	14	563	619	34	52	330	103	3,166	9	29	88,319
\$25,000 to \$29,999	0	635	1,423	12	29	333	8	3,642	6	4	93,924
\$30,000 to \$34,999	8	486	729	14	21	451	137	3,364	12	2	93,696
\$35,000 to \$39,999	5	714	884	9	42	416	65	3,538	9	21	96,944
\$40,000 to \$44,999	4	821	1,222	26	18	315	117	4,201	10	3	103,507
\$45,000 to \$49,999	17	865	847	52	29	324	122	3,904	9	5	94,566
\$50,000 to \$59,999	19	1,823	1,758	47	78	844	206	8,348	19	13	200,810
\$60,000 to \$74,999	29	2,388	2,143	62	78	781	263	11,260	18	25	278,463
\$75,000 to \$99,999	33	3,458	3,486	258	99	1,343	816	17,957	33	28	391,503
\$100,000 to \$124,999	21	2,780	2,634	134	44	1,249	468	14,564	16	22	316,297
\$125,000 to \$149,999	5	1,858	1,672	33	59	886	162	9,787	10	21	232,045
\$150,000 to \$199,999	6	1,653	1,726	115	30	1,031	349	10,954	12	14	287,746
\$200,000 or more	0	750	1,597	14	13	538	109	8,715	4	9	364,159
Total Households	186	20,984	24,187	900	725	9,730	3,166	114,556	213	221	2,931,841
Median Income	\$62,778	\$75,059	\$67,975	\$88,036	\$55,202	\$77,849	\$83,027	\$81,501	\$52,292	\$68,125	\$82,400

Table A8 Housing Estimates and Forecast, Thurston County Cities, Urban Growth Areas, and Reservations, 2010 to 2045

Jurisdiction	Census Calibrated					TRPC					TRPC Forecast							
	2010	2020	2021	2022	2025	2030	2035	2040	2045	2010	2020	2021	2022	2025	2030	2035	2040	2045
Bucoda	Total	245	241	250	255	280	315	355	375									
Lacey	City	18,490	22,039	22,080	23,450	25,230	26,150	27,540	28,090									
	UGA	13,250	14,565	14,550	13,640	17,180	18,820	20,040	21,330									
Olympia	Total	31,740	36,604	36,630	37,090	42,410	44,970	48,870	50,730									
	City	22,090	25,642	25,860	26,220	29,210	32,120	34,630	36,580									
UGA	UGA	4,870	5,093	5,060	5,060	5,510	5,690	6,290	6,740									
	Total	26,960	30,735	30,920	31,280	34,720	37,810	40,520	42,870									
Rainier	City	715	850	920	920	1,010	1,130	1,380	1,420									
	UGA	50	54	50	50	55	60	65	75									
Total	Total	765	904	970	970	1,065	1,190	1,445	1,495									
	City	740	780	810	810	920	1,055	1,270	1,295									
UGA	UGA	5	5	5	5	5	5	5	15									
	Total	745	785	815	815	925	1,060	1,275	1,310									
Turnwater	City	8,060	10,847	11,260	11,710	13,270	14,720	16,940	17,510									
	UGA	2,650	1,427	1,390	1,390	2,290	3,010	3,880	3,950									
Total	Total	10,710	12,274	12,650	13,100	15,560	17,730	20,820	21,460									
	City	2,520	3,455	3,350	3,550	5,310	7,090	8,690	10,960									
UGA	UGA	530	516	530	530	540	550	570	660									
	Total	3,050	3,971	3,880	4,080	5,850	7,640	9,250	11,620									
Grand Mound UGA	Total	375	424	450	470	510	600	675	735									
Chehalis Reservation	Total	20	20	20	20	20	20	20	20									
Nisqually Reservation	Total	190	220	255	255	315	315	325	330									
Total Cities		52,870	63,854	64,530	66,910	75,230	82,580	88,930	94,130									
Total UGAs (1)		21,730	22,084	22,030	21,140	26,090	28,730	30,770	34,830									
Total Reservations (2)		210	240	280	280	330	340	350	350									
Rural Unincorporated County (3)		33,380	35,260	35,890	36,070	37,370	39,050	40,480	42,680									
Thurston County Total		108,200	121,438	122,700	124,400	139,000	150,700	160,500	175,800									

SOURCE: Thurston Regional Planning Council. Small Area Population Estimates and Population and Employment Forecast, 2018.
 NOTES: Estimates are for April 1 and reflect city limits on that date. A decrease in UGA dwellings is likely due to annexation. Numbers may not add due to rounding. 1) Urban Growth Area (UGA): Unincorporated area designated to be annexed into city limits over 20 years to accommodate urban growth. 2) Reservations: Estimate is for Thurston County portion of reservation only. 3) Rural Unincorporated County is the portion of the unincorporated county that lies outside UGA and Reservation boundaries.

Table A9 Housing Estimates by Type, Thurston County Cities, Urban Growth Areas, and Reservations, 2022

Jurisdiction		Single-family	Multifamily	Manufactured Home	Total
Bucoda	Total	205	5	45	255
Lacey	City	14,090	8,130	1,220	23,450
	UGA	10,380	2,100	1,160	13,640
	Total	24,470	10,230	2,380	37,090
Olympia	City	13,180	12,090	950	26,220
	UGA	3,710	1,270	80	5,060
	Total	16,890	13,360	1,030	31,280
Rainier	City	685	80	155	920
	UGA	40	0	10	50
	Total	725	80	165	970
Tenino	City	575	125	110	810
	UGA	5	0	0	5
	Total	580	125	110	815
Tumwater	City	6,770	4,180	760	11,710
	UGA	740	130	510	1,390
	Total	7,510	4,310	1,270	13,100
Yelm	City	2,610	840	130	3,570
	UGA	350	0	160	510
	Total	2,960	840	290	4,080
Grand Mound UGA	Total	230	85	155	470
Chehalis Reservation	Total	5	0	15	20
Nisqually Reservation	Total	225	25	10	255
Total Cities		38,110	25,450	3,370	66,930
Total UGAs (1)		15,450	3,590	2,070	21,120
Total Reservations (2)		230	20	20	280
Rural Unincorporated County (3)		27,480	730	7,860	36,070
Thurston County Total		81,300	29,800	13,300	124,400

SOURCE: Thurston Regional Planning Council Small Area Population Estimates.

NOTES: Estimates are for April 1 and reflect city limits on that date. A decrease in UGA dwellings is likely due to annexation. Numbers may not add due to rounding. 1) Urban Growth Area (UGA): Unincorporated area designated to be annexed into city limits over 20 years' time to accommodate urban growth. 2) Reservations: Estimate is for Thurston County portion of reservation only. 3) Rural Unincorporated County is the portion of the unincorporated county that lies outside UGA and Reservation

Table A10 Residential Units Permitted, by Jurisdiction, 2017-2021

Jurisdiction		2017	2018	2019	2020	2021
Bucoda	Total	0	0	0	1	2
Lacey	City	171	1,025	259	174	750
	UGA	179	129	186	127	484
	Total	350	1,154	445	301	1,234
Olympia	City	134	547	180	288	325
	UGA	26	46	15	86	12
	Total	160	593	195	374	337
Rainier	City	14	24	22	44	2
	UGA	0	1	2	0	0
	Total	14	25	24	44	2
Tenino	City	0	6	2	36	0
	UGA	0	0	0	0	0
	Total	0	6	2	36	0
Tumwater	City	201	74	244	321	383
	UGA	7	10	7	5	3
	Total	208	84	251	326	386
Yelm	City	52	45	21	41	207
	UGA	0	1	3	2	0
	Total	52	46	24	43	207
Grand Mound UGA	Total	5	3	9	20	25
Chehalis Reservation	Total	0	1	0	0	0
Nisqually Reservation	Total	25	26	0	0	2
Total Cities		572	1,721	728	905	1,669
Total UGAs (1)		217	190	222	240	524
Total Reservations (2)		25	27	0	0	2
Rural Unincorporated County (3)		331	343	313	293	270
Total Single-Family		914	724	636	723	717
Total Multifamily		161	1,480	558	631	1,666
Total Manufactured Housing		70	77	69	84	82
Thurston County Total		1,145	2,281	1,263	1,438	2,465

SOURCE: Thurston Regional Planning Council. Bucoda, Lacey, Olympia, Rainier, Tenino, Tumwater, Yelm and Thurston County building departments.

NOTES: Count of dwelling units permitted; may not reflect actual housing units built. Permits are reported for each calendar year for most recent jurisdiction boundaries. Excludes demolitions and reissued permits. 1) Urban Growth Area (UGA): Unincorporated area designated to be annexed into city limits over 20 years to accommodate urban growth. 2) Reservations: Estimate is for Thurston County portion of reservation only. 3) Rural Unincorporated County is the portion of the unincorporated county that lies outside UGA and Reservation boundaries.

Table A11 Population Estimate and Forecast by School District, 2020-2045

District Name	TRPC Estimate				TRPC Forecast (Adopted 2018)				
	2020	2021	2022	2023	2025	2030	2035	2040	2045
Centralia (1)	520	520	520	520	620	740	830	910	960
Griffin	6,490	6,500	6,540	6,540	6,570	6,660	6,820	6,980	7,120
North Thurston	111,180	113,060	114,210	116,350	120,940	126,170	130,640	134,780	138,580
Olympia	70,390	70,610	71,200	71,590	73,380	76,990	80,730	83,680	86,120
Rainier	6,000	6,110	6,210	6,250	6,820	8,860	10,930	13,140	14,570
Rochester (1)	14,750	14,690	14,780	14,770	15,660	16,300	16,860	17,320	17,660
Tenino	10,380	10,570	10,690	10,710	10,980	11,790	12,510	13,110	13,520
Tumwater	43,690	44,220	44,650	44,900	49,100	53,440	57,380	60,430	62,020
Yelm (1)	31,390	31,520	31,690	31,760	32,430	35,050	37,700	40,340	42,950

SOURCE: Thurston Regional Planning Council, *Small Area Population Estimates and Population and Employment Forecast (2018 Update)*

NOTES: Estimates are for April 1 of each year. Numbers may not add due to rounding. 1) Estimates are for Thurston County portion of districts only.

Table A12 Population Estimate and Forecast by Fire District, 2020-2045

Fire District	TRPC Estimate				TRPC Forecast (Adopted 2018)				
	2020	2021	2022	2023	2025	2030	2035	2040	2045
Bucoda	600	600	610	620	630	680	720	760	800
Olympia	55,380	55,960	56,370	56,900	58,840	62,980	66,960	69,760	72,040
Tumwater	25,570	26,050	26,360	26,710	29,120	31,670	34,090	35,920	36,900
1: Rochester	13,070	13,150	13,240	13,190	14,010	14,610	15,120	15,540	15,830
2: Yelm	23,060	23,130	23,230	23,290	25,200	29,250	33,090	36,430	38,940
3: Lacey	102,420	104,210	105,280	107,310	110,420	114,780	118,600	122,830	127,150
4: Rainier	6,210	6,340	6,440	6,490	6,280	6,710	7,090	7,620	7,880
6: East Olympia	11,820	11,870	11,940	11,900	11,980	12,240	12,590	13,000	13,380
8: South Bay	12,870	12,990	13,090	13,070	12,610	12,790	13,170	13,620	14,110
9: McLane Black Lake	15,100	14,700	14,930	14,870	17,570	18,560	19,330	20,070	20,420
11: Littlerock	10,180	10,090	10,150	10,170	10,920	11,930	13,000	13,740	14,110
12: South Thurston	7,120	7,270	7,310	7,320	7,390	7,850	8,280	8,610	8,800
13: Griffin	5,610	5,620	5,650	5,660	5,550	5,630	5,760	5,890	5,990
17: Bald Hills	4,660	4,700	4,760	4,770	4,270	4,400	4,550	4,720	4,850

SOURCE: Thurston Regional Planning Council, Small Area Population Estimates and Population and Employment Forecast
 NOTES: Estimates are for April 1 of each year. Estimates are for April 1, 2020 Fire District tax boundaries