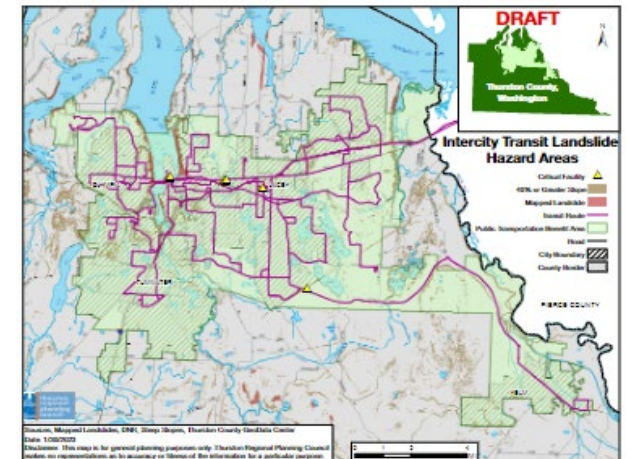
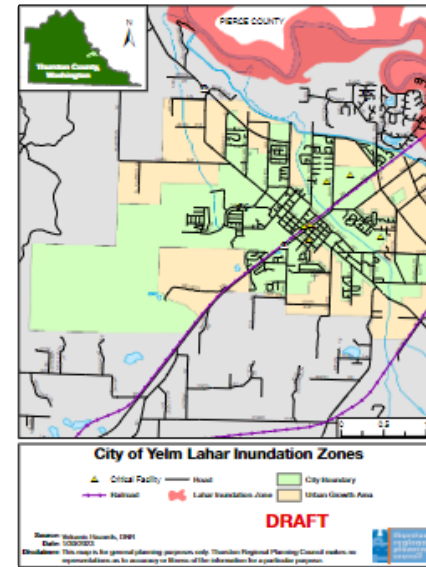




Annex Hazard Maps

Coordinating Review and Updates













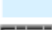

Hazard Maps by Jurisdiction

Number of hazard maps varies based on location of hazards:

1. Dam Failure
2. Earthquake/Liquefaction
3. Flood
4. Landslide
5. Sea Level Rise
6. Tsunami
7. Volcanic Lahar
8. Wildfire

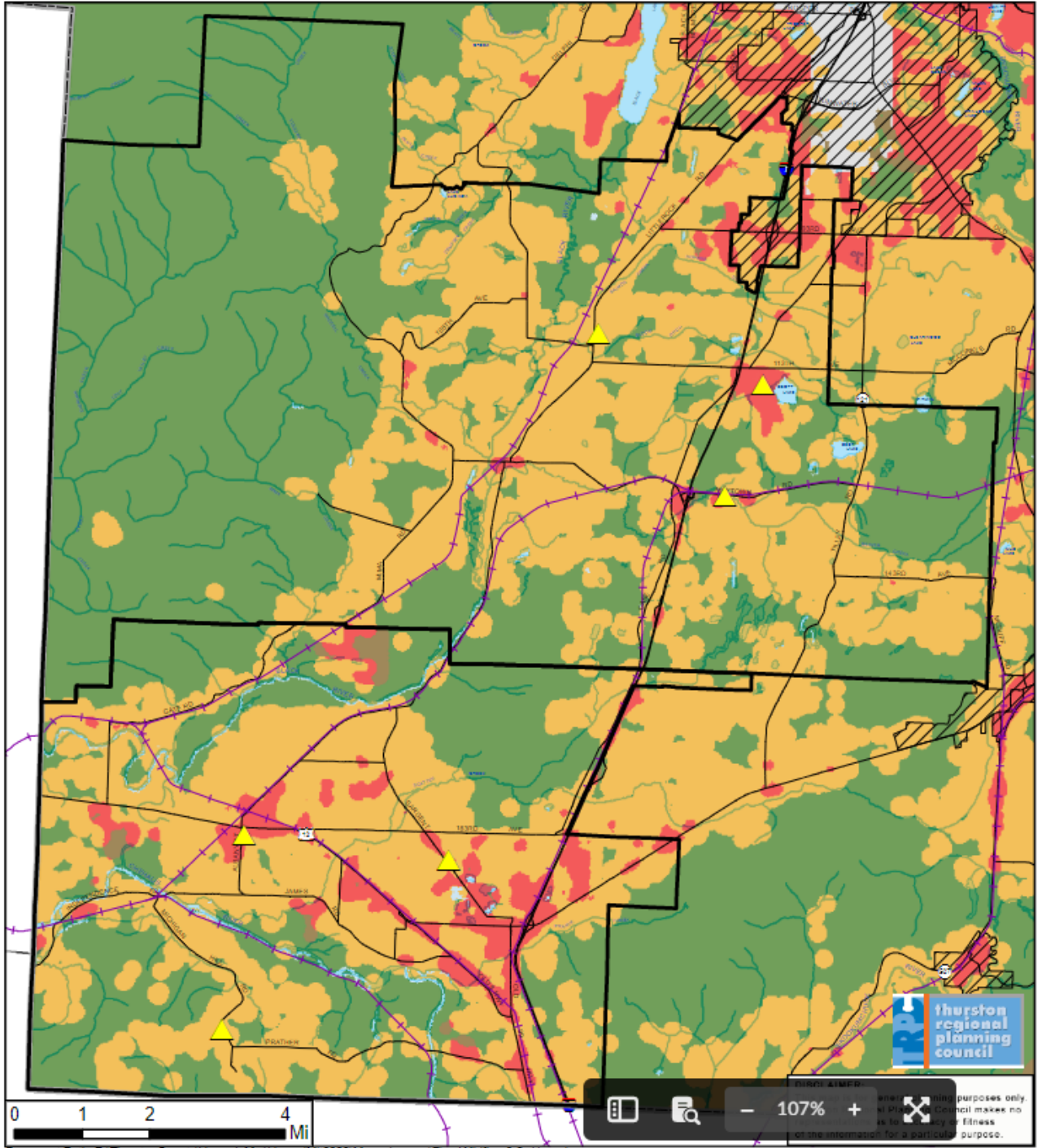
West Thurston Regional Fire Authority Wildland Urban Interface

DRAFT

-  Railroad
-  Fire Tax District
-  Critical Facility
-  Road
-  City Boundary
-  Interface
-  Intermix
-  Non-Vegetated Inhabited
-  Non-Vegetated Uninhabited
-  Vegetated Uninhabited
-  Water
-  County Border

Date: 1/31/2023

Source: Wildland Urban Interface, DNR



Feedback

Accurate information on:

- Jurisdiction Title
- Display of any critical facilities – which ones?
 - Labeling of school names, fire stations, water systems, etc.
- Special Purpose District mapping needs

Maps Online


<https://app.box.com/s/x6kygopte9j495my850ifqawxgfi56z2>



Regional Mitigation Actions

- Countywide Mitigation Initiatives
- Climate Adaptation Actions

What actions constitutes a meaningful regional mitigation strategy?

- Positive impact to reduce risks
 - Provides resources to inform mitigation actions and response
 - Actions benefits multiple communities
 - Actions are achievable and cost effective
- 

2017 Countywide Mitigation Initiatives

Priority	ID-Number	Category	Countywide Mitigation Initiatives
1	CW-MH 4	Hazard Damage Reduction	Create a lifeline transportation route GIS map for the Thurston region and integrate the data into the Thurston County Emergency Operations Plan and other local planning needs.
2	CW-MH 7	Hazard Preparedness	Strengthen interjurisdictional asset management capabilities.
3	CW-MH 6	Public Information	Develop and maintain a hazards mitigation public outreach strategy.
4	CW-FH 1	Data Collection and Mapping	Develop emergency evacuation routes and update Comprehensive Emergency Management Plans for potential catastrophic dam failure.
5	CW-SH 1	Hazard Preparedness	Develop a disaster debris management strategy.
6	CW-WH 1	Data Collection and Mapping	Map the region's high risk wildland urban interface communities.
7	CW-MH 1	Data Collection and Mapping	Inventory essential facilities and assets to support hazard mitigation planning and emergency management.
8	CW-EH 2	Data Collection and Mapping	Enhance earthquake modeling capacity and integrate into emergency management work programs.
9	CW-MH 11	Data Collection and Mapping	Inventory and assess sheltering facilities.
10	CW-MH 9	Data Collection and Mapping	Map transportation infrastructure that is subject to frequent flooding or is prone to landslide hazards.
11	CW-MH 10	Plan & Coordination Implementation	Develop and adopt a Climate Adaptation Plan.
12	CW-MH 8	Hazard Preparedness	Strengthen the capabilities to establish and maintain situational awareness of health and medical system and resource coordination during an emergency.

Thurston Climate Adaptation Plan

Produced by TRPC in 2018

Identified 91 Climate Adaptation Actions covering:

1. General
2. Drought and Water Quality
3. Flood and Erosion
4. Plants and Animals
5. Transportation and Energy
6. Wildfire and Extreme Heat

General Climate Adaptation Actions

G-11: Create a website that details health risks exacerbated by climate change and provides information that helps residents prepare for and respond to drought, poor air quality, extreme heat, disease vectors, and other threats

G-17 Advocate for expanding the eligibility of federal disaster-assistance funding to allow for the replacement or relocation of aging or vulnerable infrastructure before it fails

Flood and Erosion Climate Adaptation Actions

F-01 Evaluate and secure sustained funding to restore and protect riparian vegetation along freshwater and marine shorelines.

F-02 Incorporate projected sea-level rise and flooding information into the designation of regulatory hazard areas.

F-03 Design new and replacement stream culverts and other drainage infrastructure to accommodate projected higher peak flows associated with more frequent and intense heavy precipitation events.

F-04 Install flood gates and pumps on stormwater outfalls connected to Puget Sound to mitigate back-ups during high tides and heavy rains exacerbated by rising seas.

F-05 Build floodwalls or other protective structures around critical facilities located in areas vulnerable to flooding as a result of sea-level rise and heavy precipitation.

F-06 Require that new or renovated buildings utilize flood-protection measures (such as raised finished-floor levels and temporary flood barriers) to accommodate projected sea-level rise over the structures' lifespan.

F-08 Assess drinking water wells' vulnerability to saltwater intrusion and inundation from rising sea levels, and develop adaptation measures (e.g., relocating wells).

F-11 Protect important historical or cultural sites that are at risk of coastal or inland flooding, erosion, and wildfires.

Wildfire and Extreme Heat Climate Adaptation Actions

W-01 Create and maintain a map of the region's high-risk Wildland Urban Interface (WUI) communities

W-02 Require new developments in high-risk wildfire areas to submit a fire-protection plan during site review

W-03 Provide private forestland owners and residents living in WUI areas information about fire prevention/Firewise practices,

W-05 Adopt wildfire hazard overlay districts with development regulations (for new structures) based on factors such as slope, structure, and fuel hazards.

W-09 Account for the inclusion of defensible spaces into future developments (e.g., designing roads, pathways, sidewalks, and landscaping to create firebreaks) in areas where there is high wildfire risk.

W-10 Enhance training and financial support for wildfire response.

W-11 Expand the region's urban tree canopy and manage forests responsibly.

W-12 Install reflective and/or vegetated roofs to reduce building energy consumption and the urban heat island effect.