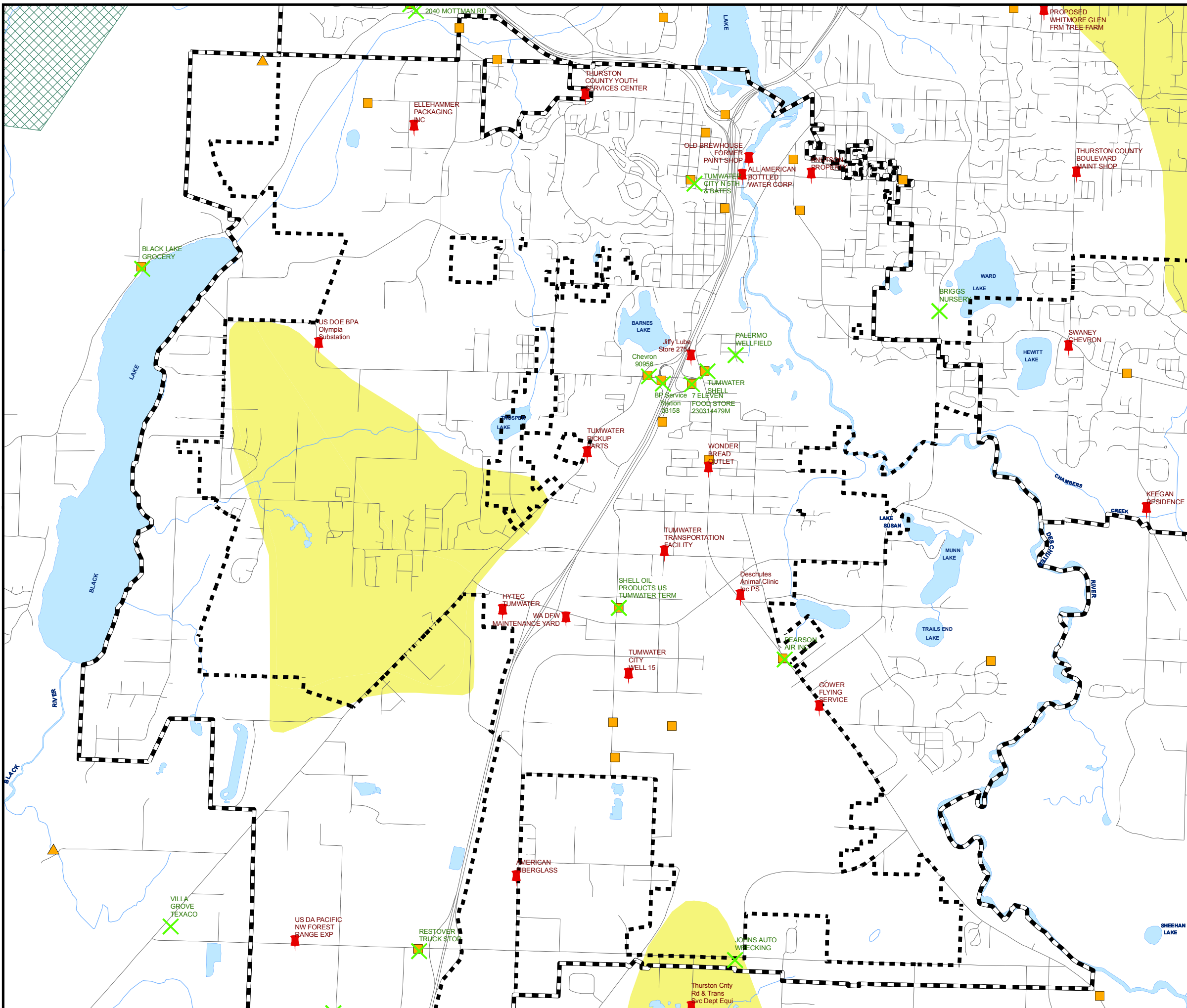


Shoreline Master Program Tumwater

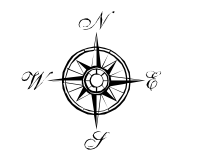
Known Sites with Hazardous or Toxic Materials



- Contaminated Sites - No Further Action Needed
- Contaminated Sites - Confirmed and Suspected
- Leaking Underground Storage Tanks
- Areas of Pesticide Contamination
- Elevated Chloride Areas
- Elevated Nitrate Areas
- Urban Growth Boundary
- City Limits
- Roads
- Landfills and Dumps



DISCLAIMER:
This map is for general planning purposes only. Thurston Regional Planning Council makes no representations as to accuracy or fitness of the information for a particular purpose.



MAP # T-10

Printing Date: February 26, 2008
File: P:\ThurstonCounty\smupdate\maps_images\hotspots_tumwater.mxd