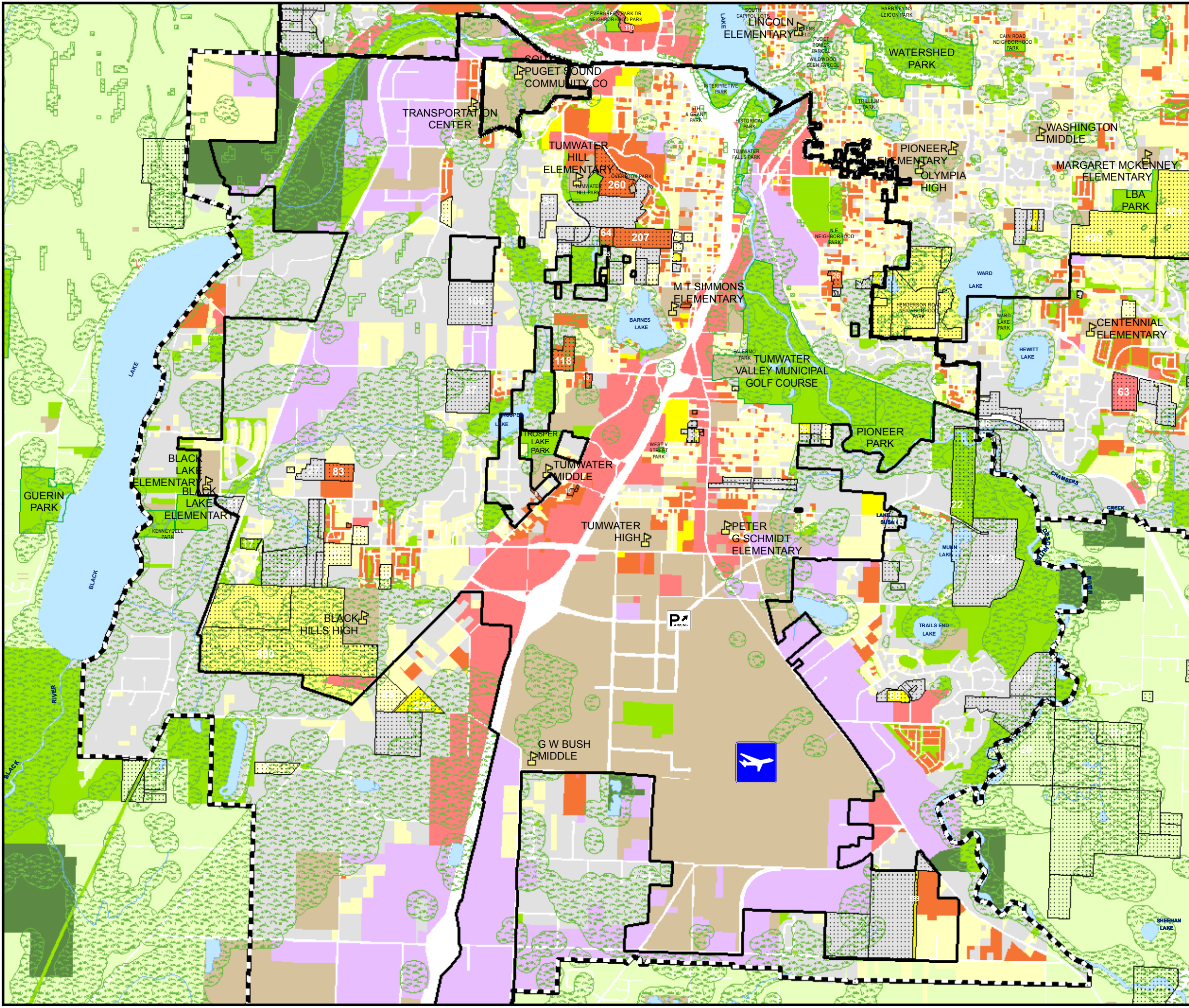


Shoreline Master Program

Tumwater

Future Land Use

- Commercial
 - Industrial
 - Government/Institutional
- Residential**
- Low Density - 0 to <3.5 du/acre
 - Moderate Density - 3.5 to <6.5 du/acre
 - Master Planned Community
 - High Density - 6.5 to <14.5 du/acre
 - Very High Density - 14.5 or more du/ac
 - Rural Residential or Resource
 - Under Application for Residential Development (number of units noted on map)
- Other**
- Water Bodies
 - Natural Resources (Public and Private)
 - Parks, Preserves, & Open Space
 - Parks Boundaries
 - Locally Adopted Critical Areas & Buffers As Defined Under the Growth Management Act
 - ✈ Olympia Regional Airport
 - T Olympia Transit Center
 - P Park and Ride Sites
 - Schools
 - City Limits
 - Urban Growth Boundary



TRPC
Thurston Regional Planning Council

Source:
TRPC Buildable Lands
Program.

DISCLAIMER:
This map is for general planning purposes only. Thurston Regional Planning Council makes no representations as to accuracy or fitness of the information for a particular purpose.

